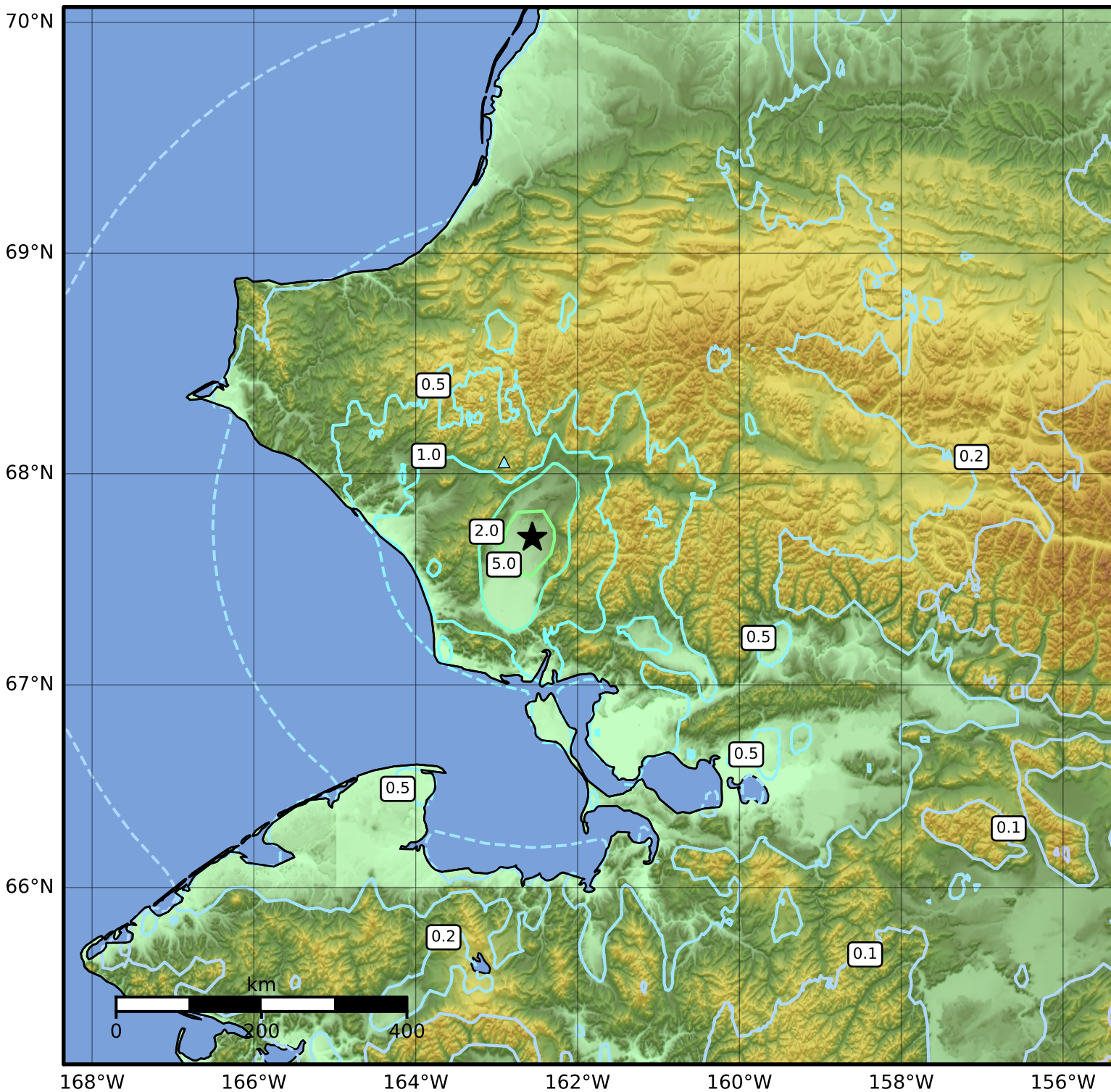


1.0 Second Peak Spectral Acceleration Map Alaska Earthquake Center  
ShakeMap: 22 km (14 miles) NE of Noatak  
Apr 18, 2014 18:44:18 UTC M5.7 N67.70 W162.56 Depth: 20.5km ID:ak0144yx0r4n



SA(1.0) (%g)	0.1	0.2	0.5	1	2	5	10	20	50	100	200
--------------	-----	-----	-----	---	---	---	----	----	----	-----	-----

Scale based on Worden et al. (2012)

△ Seismic Instrument ○ Reported Intensity

★ Epicenter

Version 1: Processed 2023-05-22T18:48:13Z