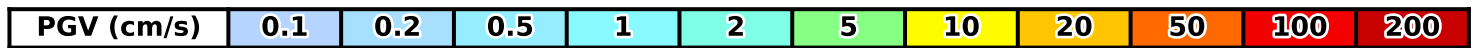
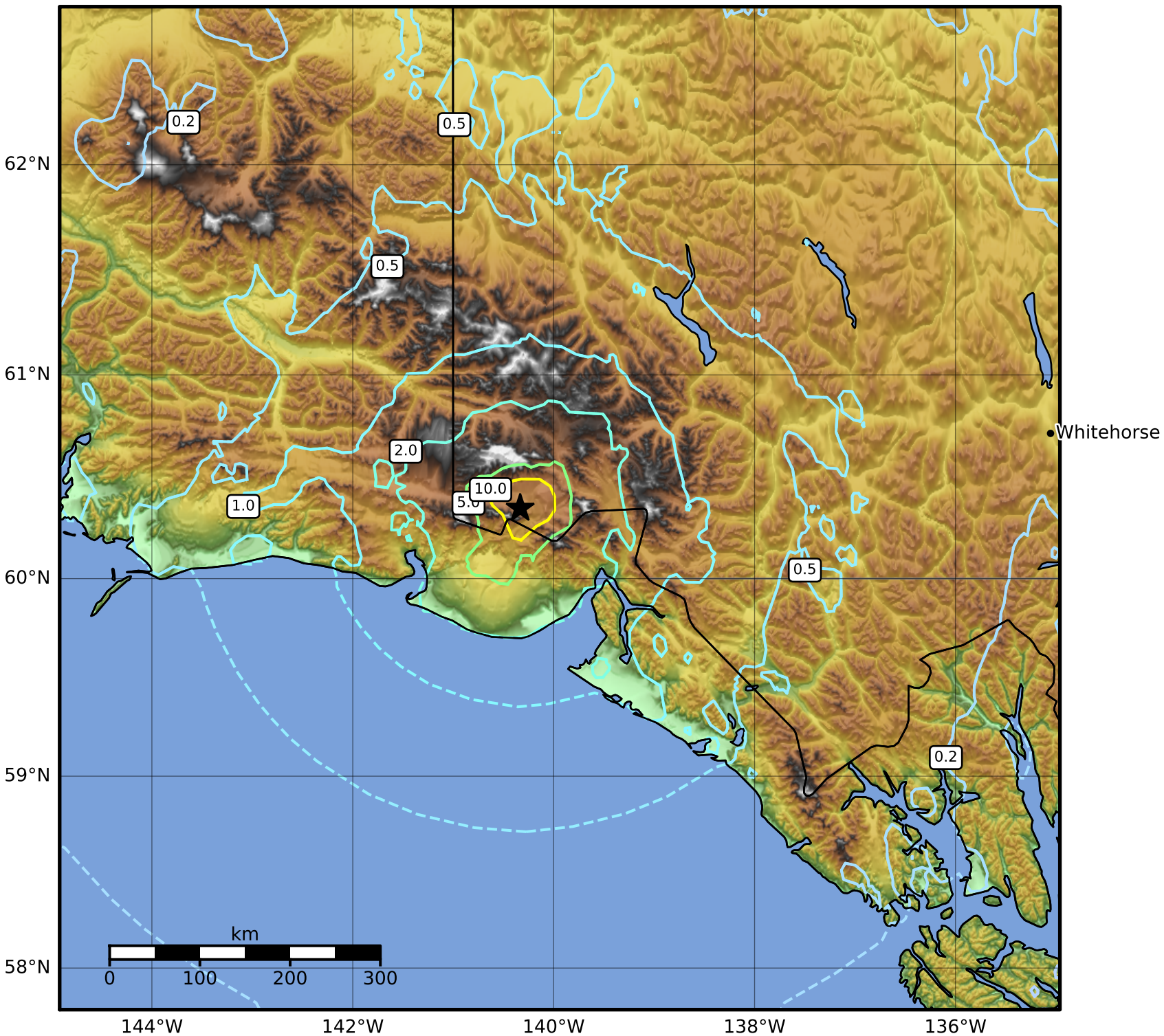


Peak Ground Velocity Map Alaska Earthquake Center  
ShakeMap: 86 km (53 miles) ENE of Icy Bay  
Jul 17, 2014 11:49:33 UTC M6.0 N60.35 W140.33 Depth: 10.0km ID:ak01493n923u



Scale based on Worden et al. (2012)

△ Seismic Instrument ○ Reported Intensity

★ Epicenter

Version 1: Processed 2023-05-22T18:36:53Z