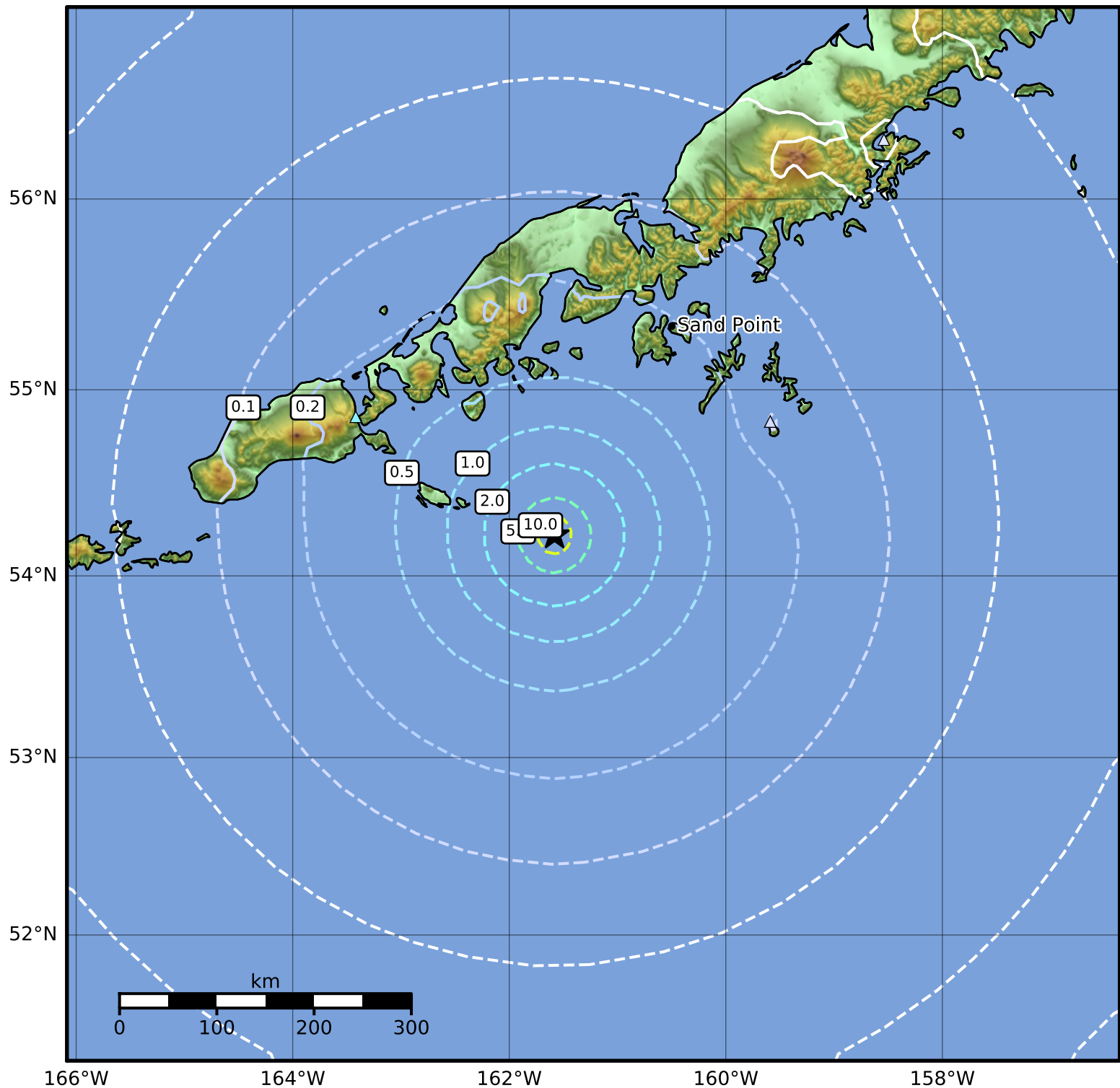


Peak Ground Acceleration Map Alaska Earthquake Center
ShakeMap: 104 km (65 miles) SSE of King Cove
Feb 03, 2022 23:53:31 UTC M5.4 N54.22 W161.58 Depth: 9.2km ID:ak0221kma6yf



PGA (%g)	0.1	0.2	0.5	1	2	5	10	20	50	100	200
----------	-----	-----	-----	---	---	---	----	----	----	-----	-----

Scale based on Worden et al. (2012)

Version 1: Processed 2023-04-12T00:39:41Z

△ Seismic Instrument ○ Reported Intensity

★ Epicenter