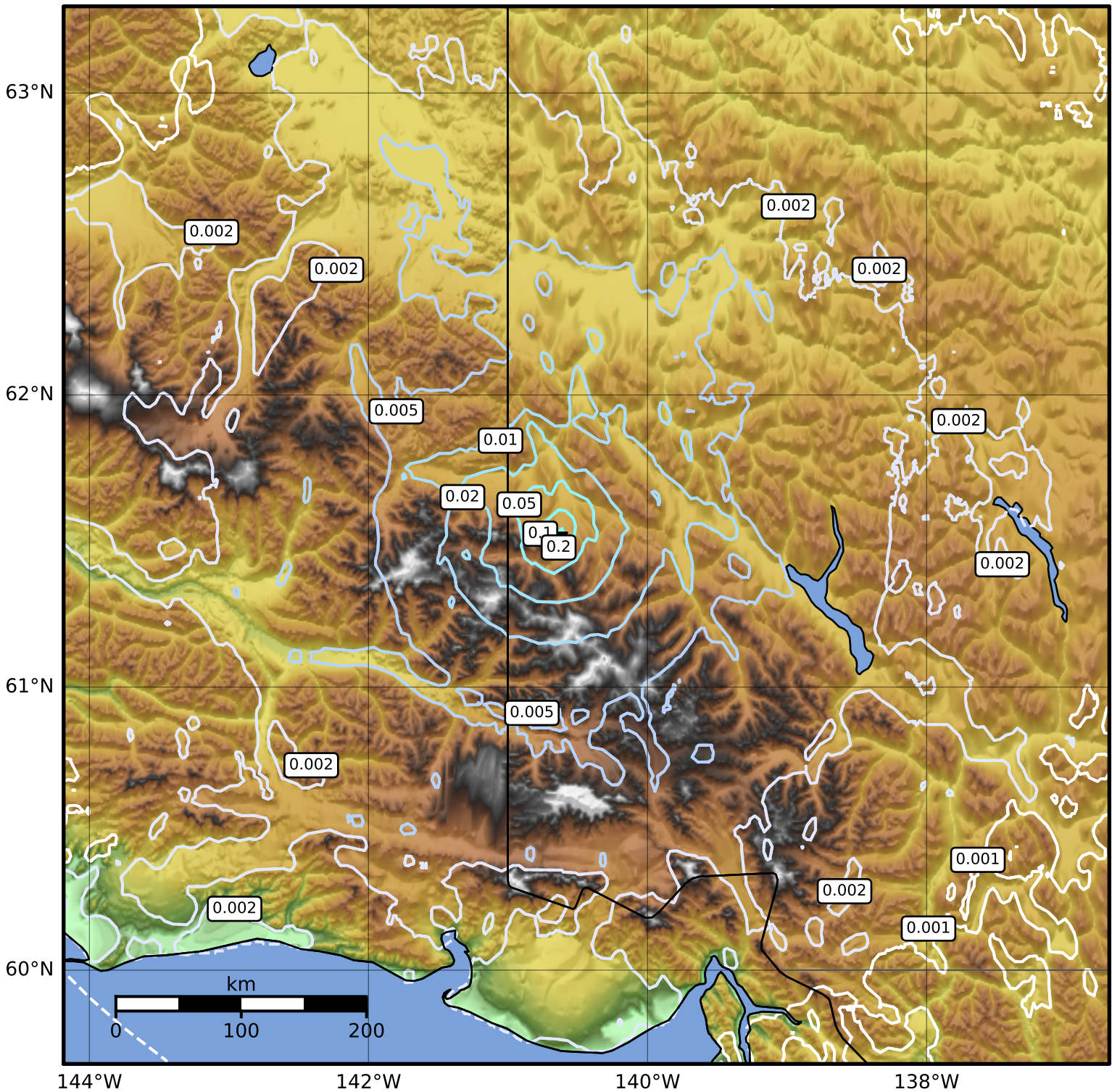


3.0 Second Peak Spectral Acceleration Map Alaska Earthquake Center
ShakeMap: 99 km (61 miles) WNW of Burwash Landing
Jan 30, 2023 09:02:44 UTC M4.5 N61.52 W140.68 Depth: 3.6km ID:ak0231drhu62



Scale based on Worden et al. (2012)

△ Seismic Instrument ○ Reported Intensity

★ Epicenter

Version 2: Processed 2023-01-30T09:15:44Z