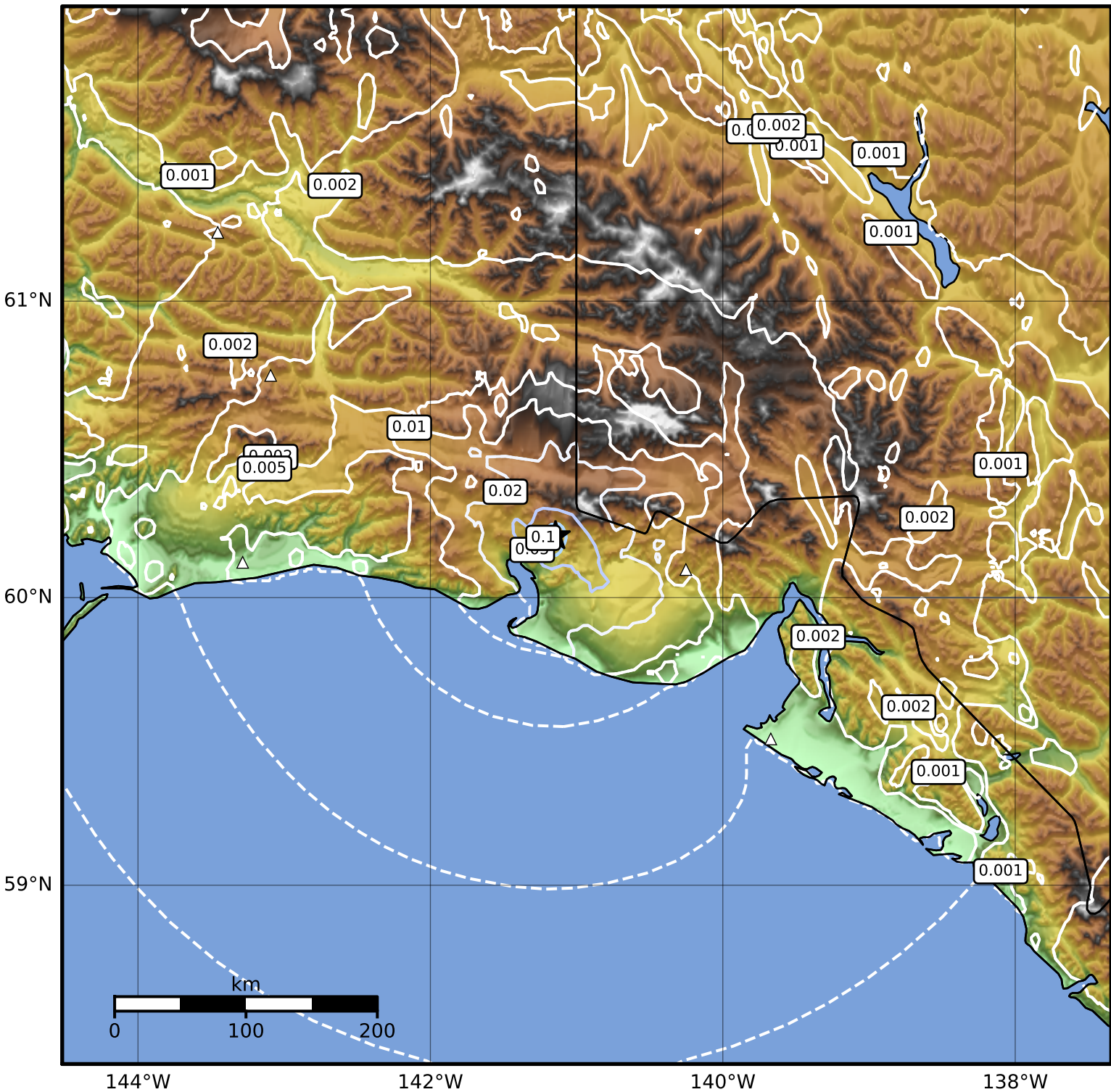


1.0 Second Peak Spectral Acceleration Map Alaska Earthquake Center  
 ShakeMap: 41 km (25 miles) NE of Icy Bay  
 Jan 22, 2024 19:02:36 UTC M3.5 N60.21 W141.14 Depth: 4.0km ID:ak02410p5dky



SA(1.0) (%g)	0.1	0.2	0.5	1	2	5	10	20	50	100	200
--------------	-----	-----	-----	---	---	---	----	----	----	-----	-----

Scale based on Worden et al. (2012)

△ Seismic Instrument ○ Reported Intensity

★ Epicenter

Version 2: Processed 2024-01-22T23:02:24Z