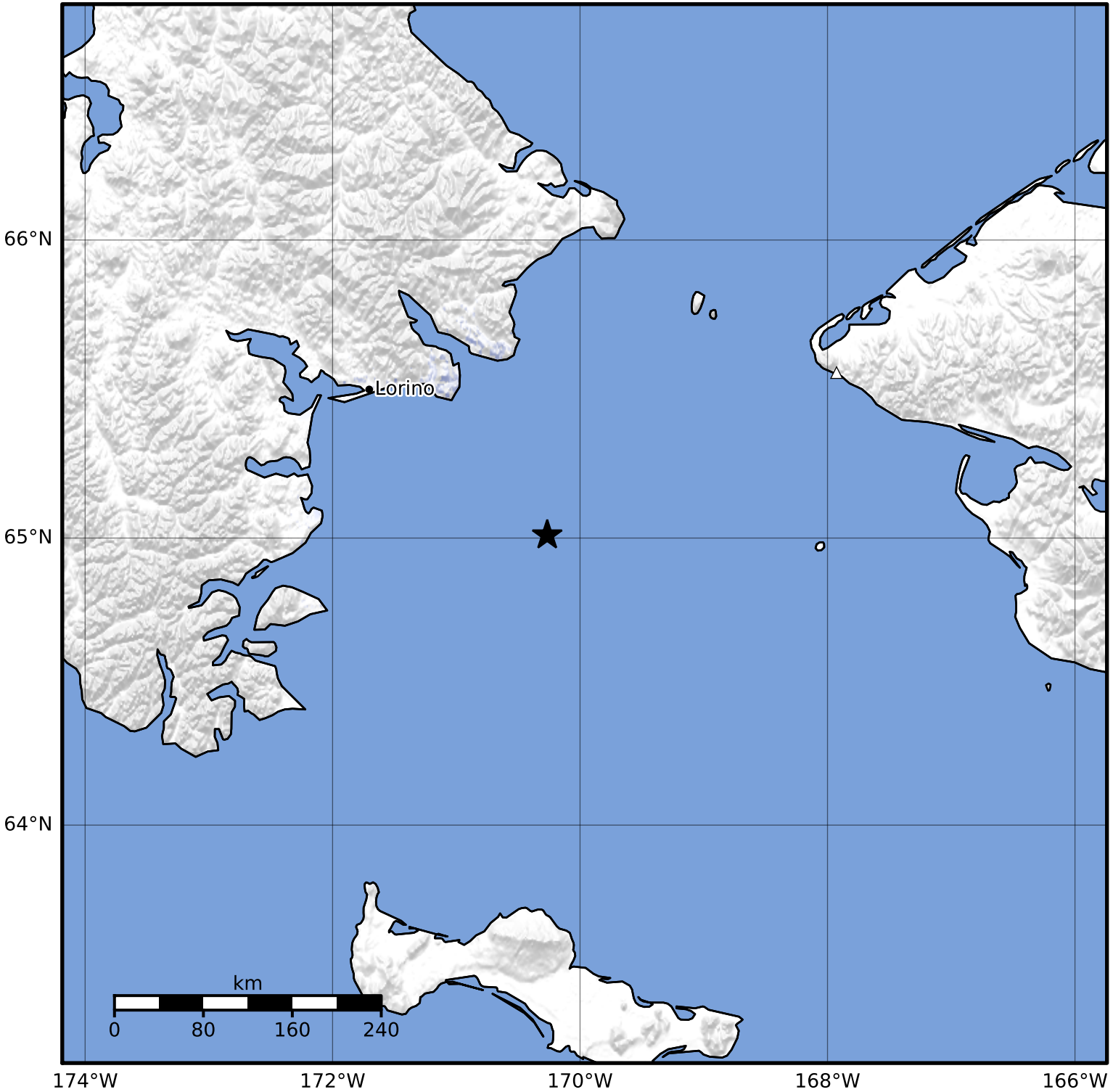


Macroseismic Intensity Map Alaska Earthquake Center  
 ShakeMap: 101 km (63 miles) SW of Little Diomede  
 Apr 01, 2024 21:31:46 UTC M3.7 N65.01 W170.27 Depth: 28.6km ID:ak02448i4rvz



SHAKING	Not felt	Weak	Light	Moderate	Strong	Very strong	Severe	Violent	Extreme
DAMAGE	None	None	None	Very light	Light	Moderate	Moderate/heavy	Heavy	Very heavy
PGA(%g)	<0.0464	0.297	2.76	6.2	11.5	21.5	40.1	74.7	>139
PGV(cm/s)	<0.0215	0.135	1.41	4.65	9.64	20	41.4	85.8	>178
INTENSITY	<b>I</b>	<b>II-III</b>	<b>IV</b>	<b>V</b>	<b>VI</b>	<b>VII</b>	<b>VIII</b>	<b>IX</b>	<b>X+</b>

Scale based on Worden et al. (2012)

Version 1: Processed 2024-04-01T21:58:53Z

△ Seismic Instrument ○ Reported Intensity

★ Epicenter