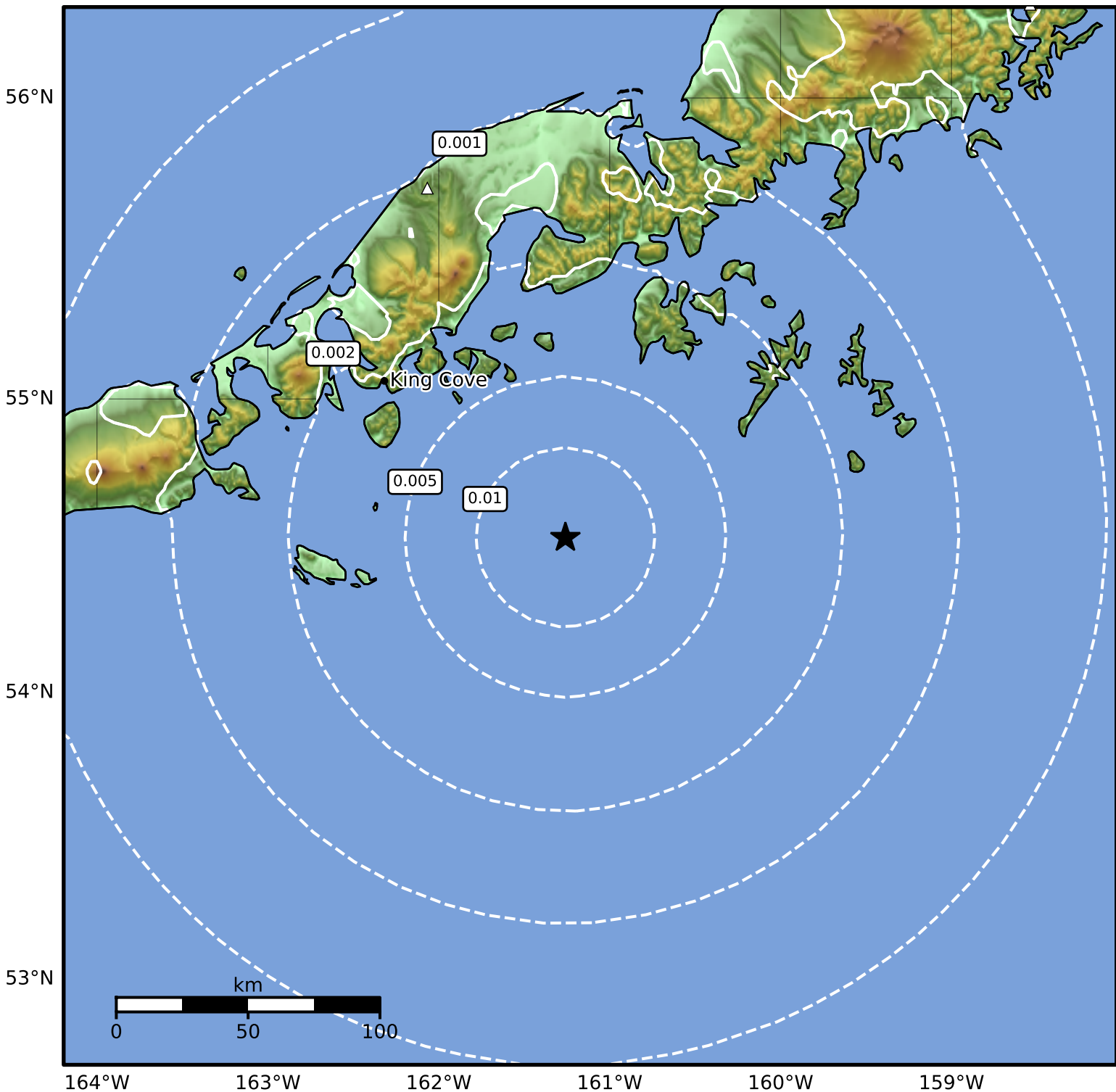


1.0 Second Peak Spectral Acceleration Map Alaska Earthquake Center  
 ShakeMap: 89 km (55 miles) SE of King Cove  
 Sep 25, 2024 13:14:55 UTC M3.6 N54.53 W161.26 Depth: 35.9km ID:ak024cd3e3zk



| SA(1.0) (%g) | 0.1 | 0.2 | 0.5 | 1 | 2 | 5 | 10 | 20 | 50 | 100 | 200 |
|--------------|-----|-----|-----|---|---|---|----|----|----|-----|-----|
|--------------|-----|-----|-----|---|---|---|----|----|----|-----|-----|

Scale based on Worden et al. (2012)

Version 1: Processed 2024-09-25T13:18:46Z

△ Seismic Instrument ○ Reported Intensity

★ Epicenter