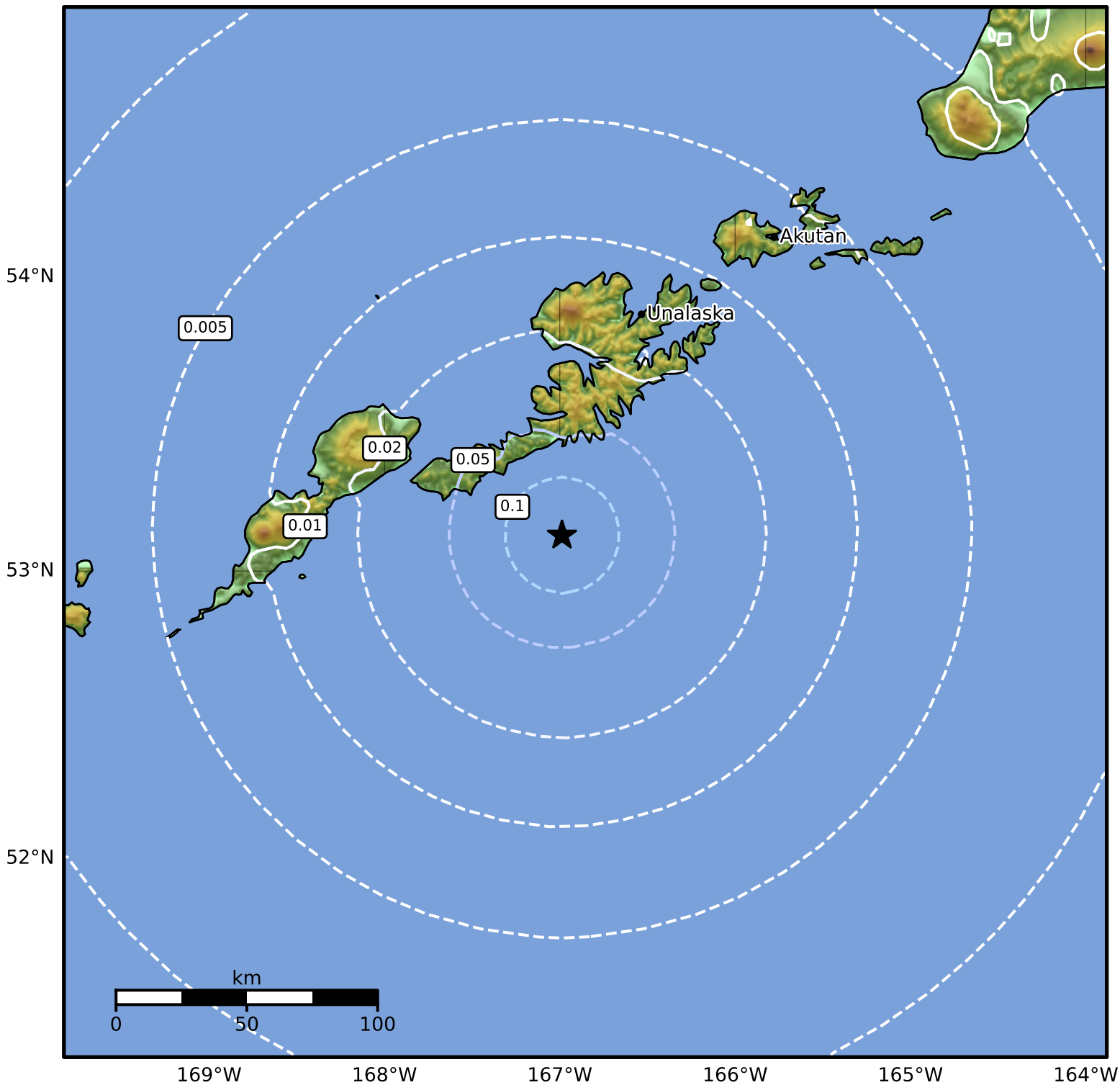


1.0 Second Peak Spectral Acceleration Map Alaska Earthquake Center
 ShakeMap: 88 km (55 miles) SSW of Unalaska
 Oct 05, 2024 20:52:07 UTC M4.1 N53.12 W166.99 Depth: 25.6km ID:ak024ctr5noo



SA(1.0) (%g)	0.1	0.2	0.5	1	2	5	10	20	50	100	200

Scale based on Worden et al. (2012)

△ Seismic Instrument ○ Reported Intensity

★ Epicenter

Version 1: Processed 2024-10-11T17:07:02Z