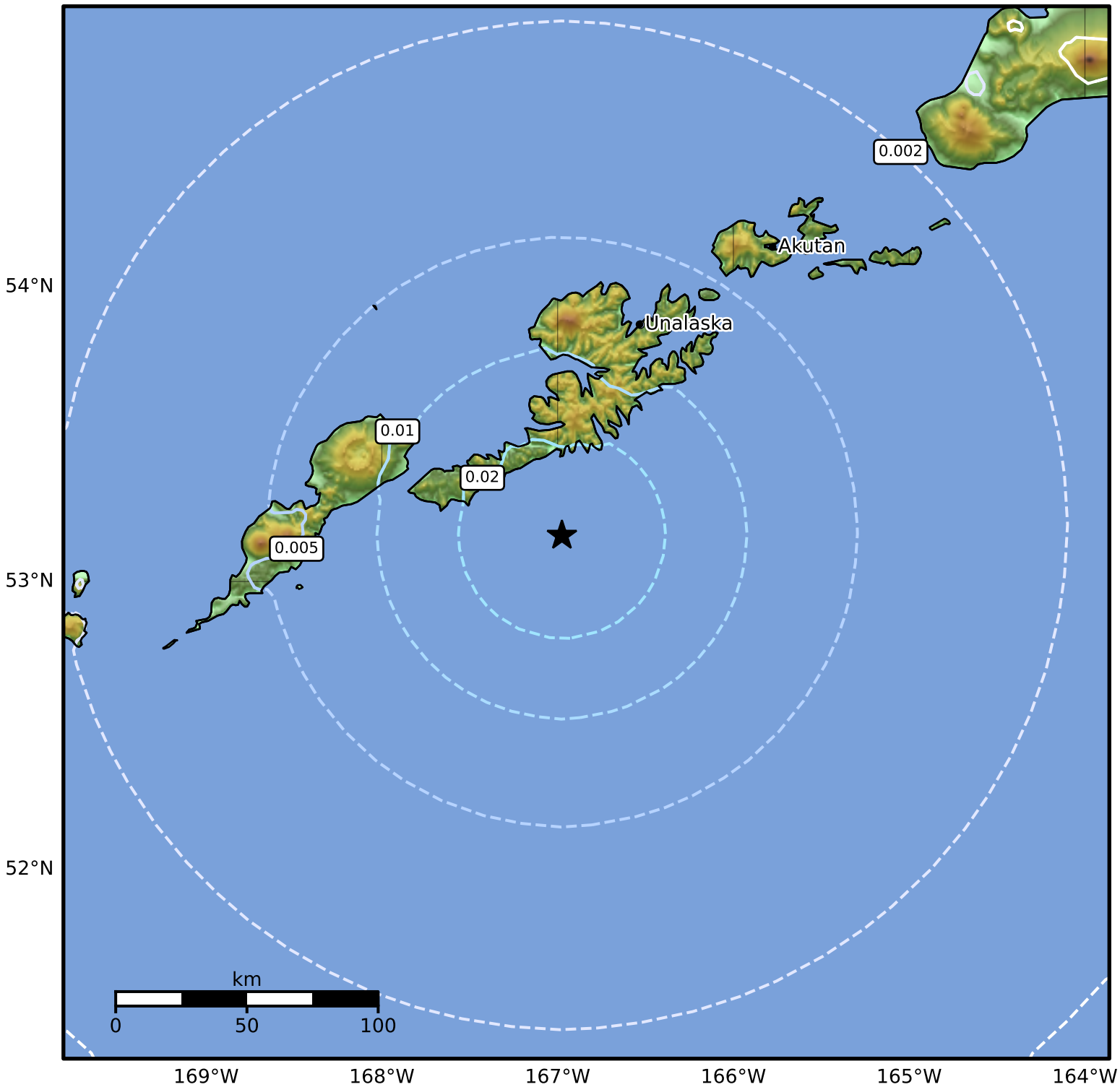


3.0 Second Peak Spectral Acceleration Map Alaska Earthquake Center
ShakeMap: 84 km (52 miles) SSW of Unalaska
Oct 06, 2024 08:34:11 UTC M4.7 N53.16 W166.98 Depth: 25.8km ID:ak024cv7fyc0



Scale based on Worden et al. (2012)

Version 1: Processed 2024-10-11T16:37:22Z

△ Seismic Instrument ○ Reported Intensity

★ Epicenter