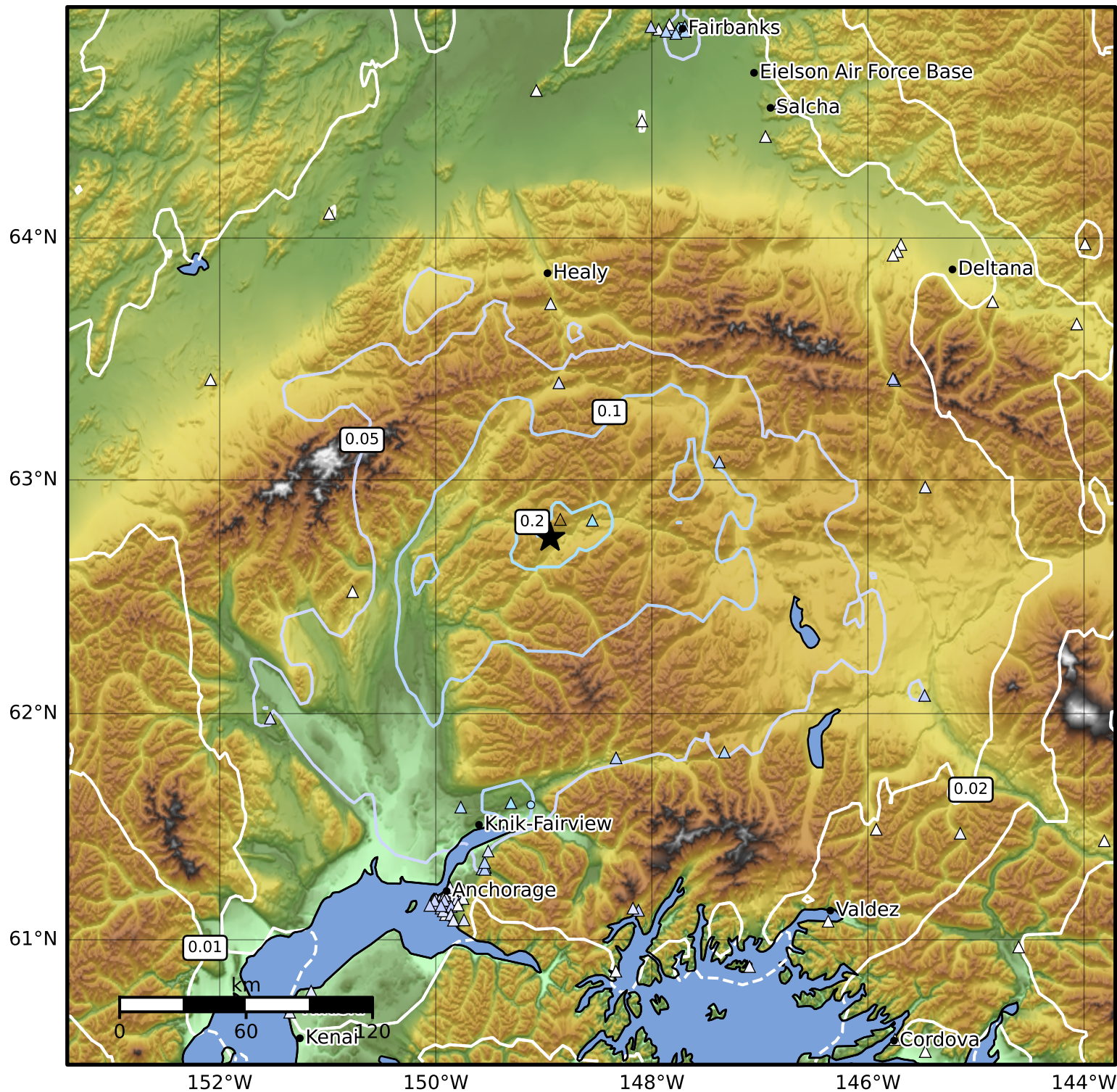


Peak Ground Velocity Map Alaska Earthquake Center  
 ShakeMap: 70 km (43 miles) S of Cantwell  
 Oct 11, 2024 19:17:33 UTC M4.5 N62.76 W148.94 Depth: 71.0km ID:ak024d3nkv0i



PGV (cm/s)	0.1	0.2	0.5	1	2	5	10	20	50	100	200
------------	-----	-----	-----	---	---	---	----	----	----	-----	-----

Scale based on Worden et al. (2012)

Version 2: Processed 2024-10-11T19:37:41Z

△ Seismic Instrument ○ Reported Intensity

★ Epicenter