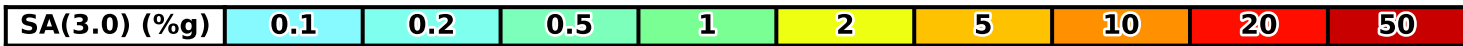
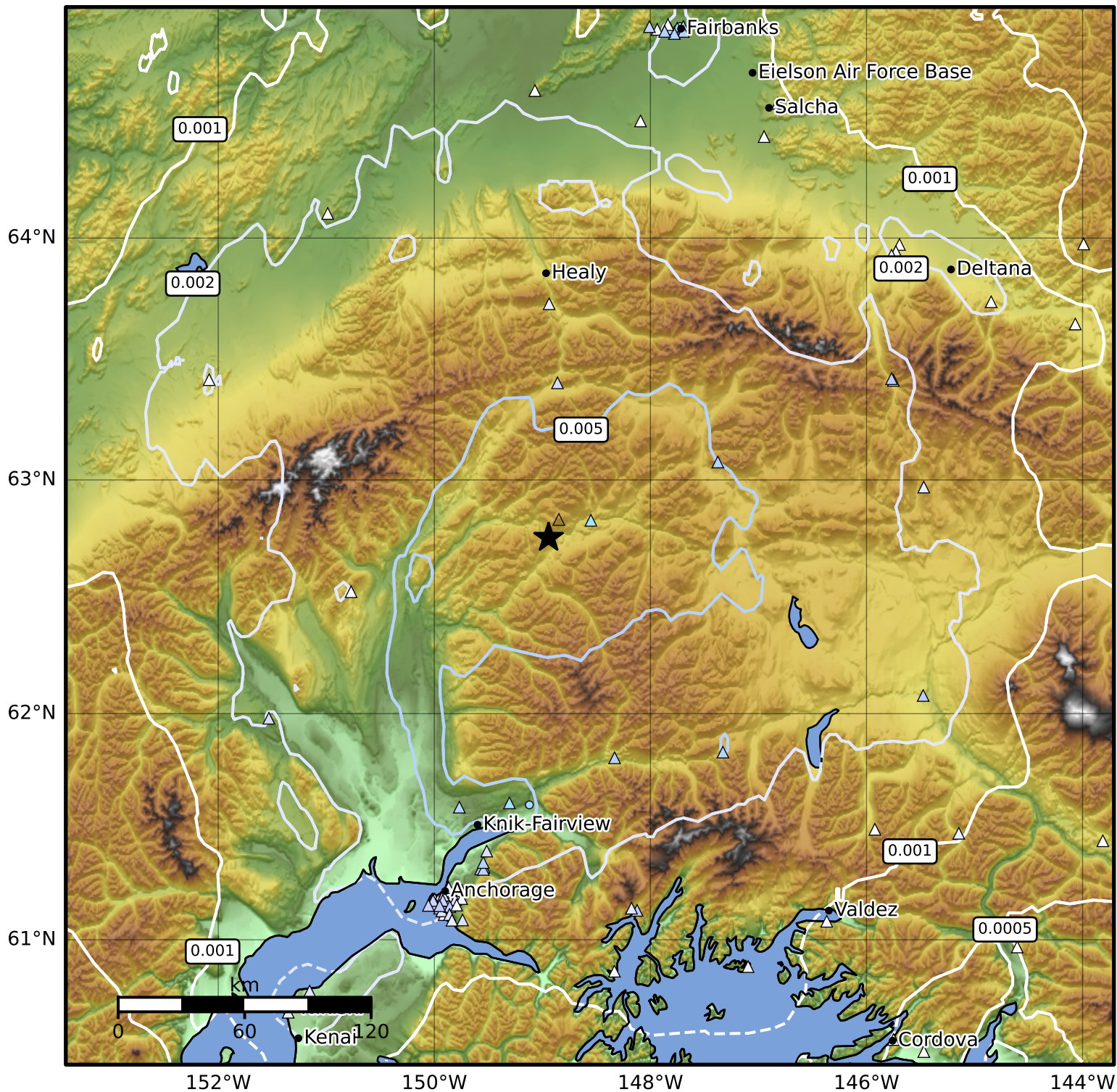


3.0 Second Peak Spectral Acceleration Map Alaska Earthquake Center
 ShakeMap: 70 km (43 miles) S of Cantwell
 Oct 11, 2024 19:17:33 UTC M4.5 N62.76 W148.94 Depth: 71.0km ID:ak024d3nkv0i



Scale based on Worden et al. (2012)

Version 2: Processed 2024-10-11T19:37:41Z

△ Seismic Instrument ○ Reported Intensity

★ Epicenter