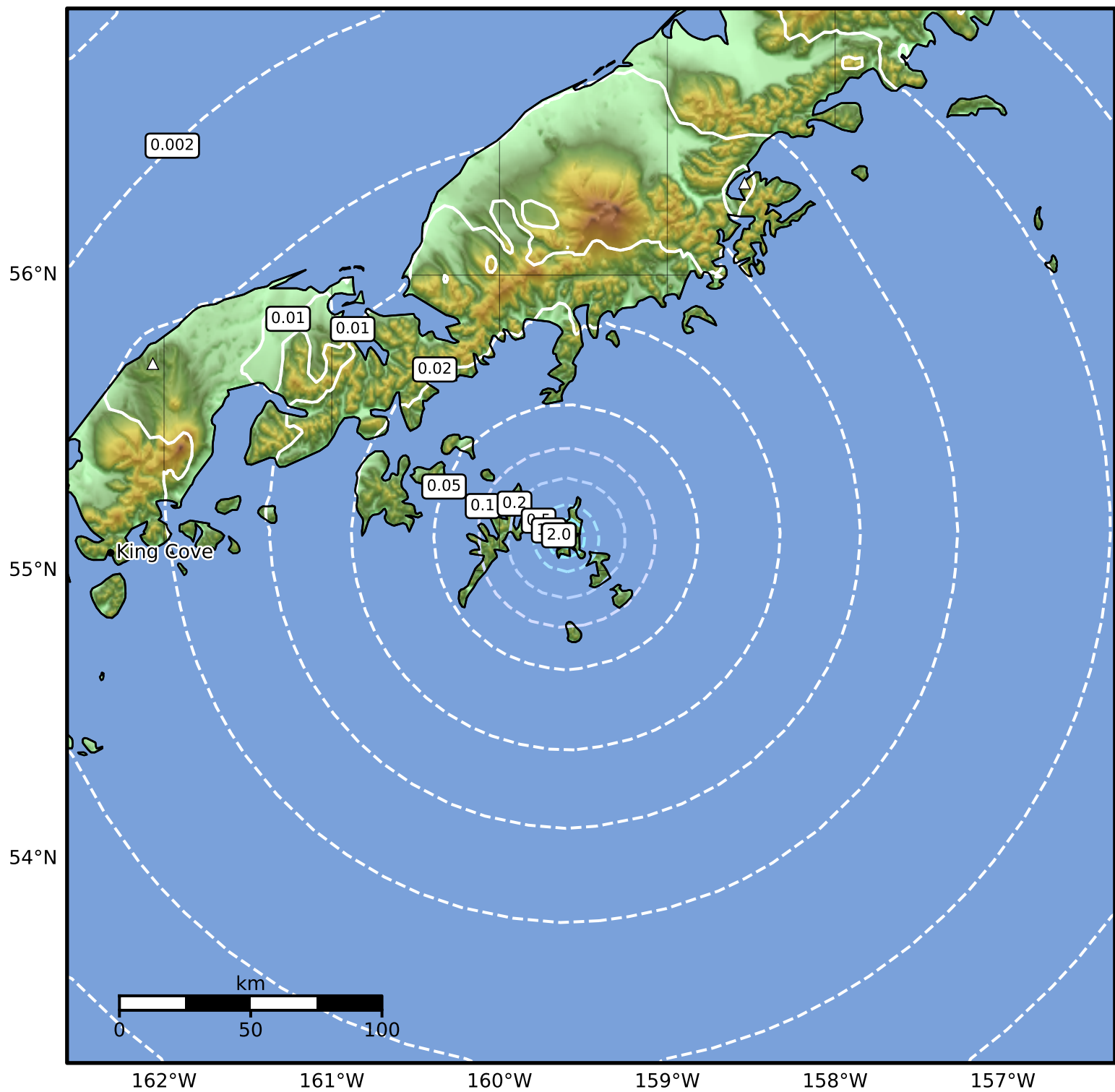


Peak Ground Acceleration Map Alaska Earthquake Center
 ShakeMap: 62 km (39 miles) ESE of Sand Point
 Oct 15, 2024 23:48:27 UTC M3.6 N55.11 W159.60 Depth: 0.0km ID:ak024dacam3q



| PGA (%g) | 0.1 | 0.2 | 0.5 | 1 | 2 | 5 | 10 | 20 | 50 | 100 | 200 |
|----------|-----|-----|-----|---|---|---|----|----|----|-----|-----|
| | | | | | | | | | | | |

Scale based on Worden et al. (2012)

Version 1: Processed 2024-10-15T23:52:21Z

△ Seismic Instrument

○ Reported Intensity

★ Epicenter