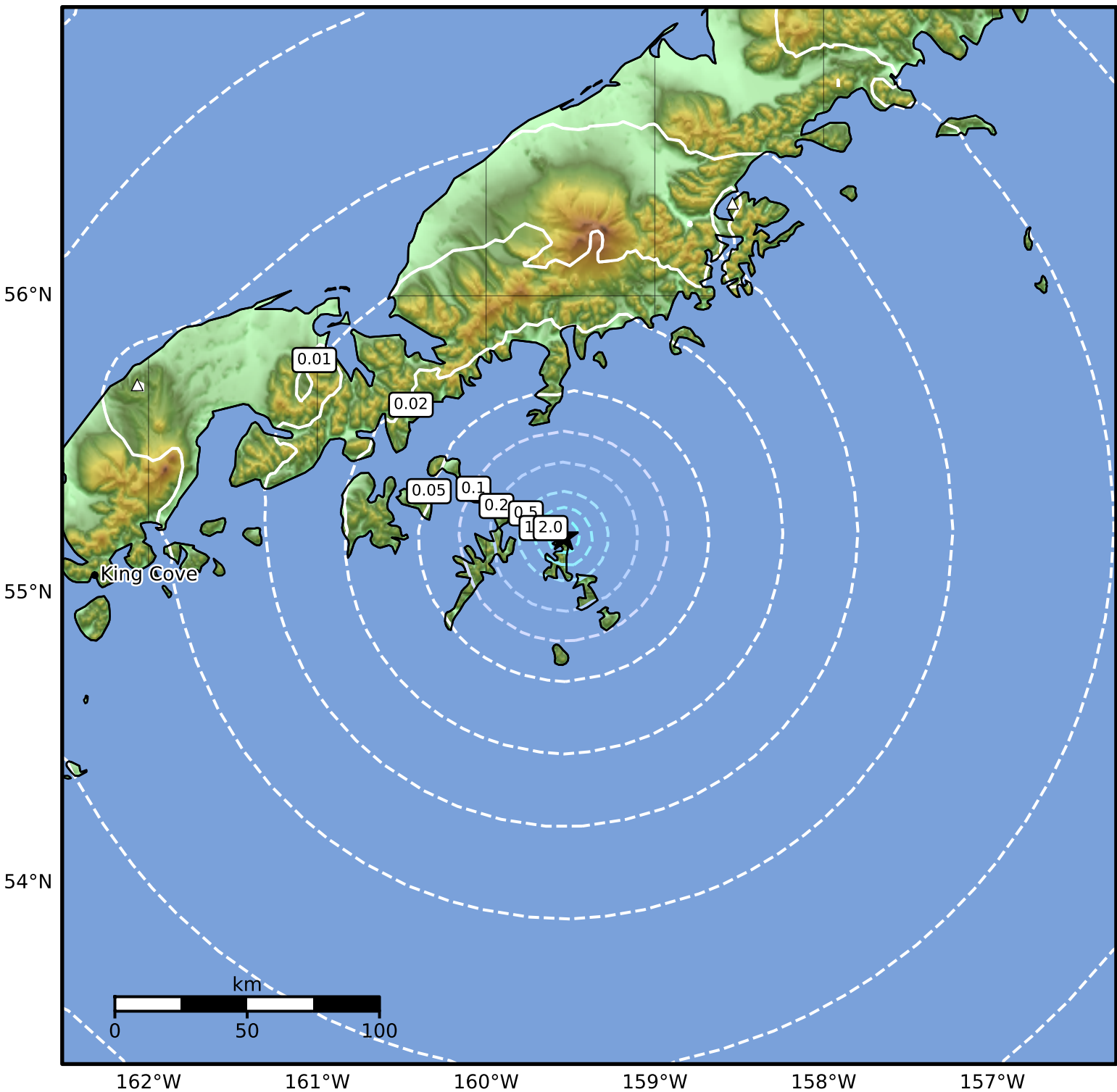


Peak Ground Acceleration Map Alaska Earthquake Center
ShakeMap: 62 km (39 miles) ESE of Sand Point
Oct 16, 2024 20:48:59 UTC M3.7 N55.19 W159.54 Depth: 4.4km ID:ak024dby1tvq



PGA (%g)	0.1	0.2	0.5	1	2	5	10	20	50	100	200
----------	-----	-----	-----	---	---	---	----	----	----	-----	-----

Scale based on Worden et al. (2012)

Version 1: Processed 2024-10-17T03:21:43Z

△ Seismic Instrument ○ Reported Intensity

★ Epicenter