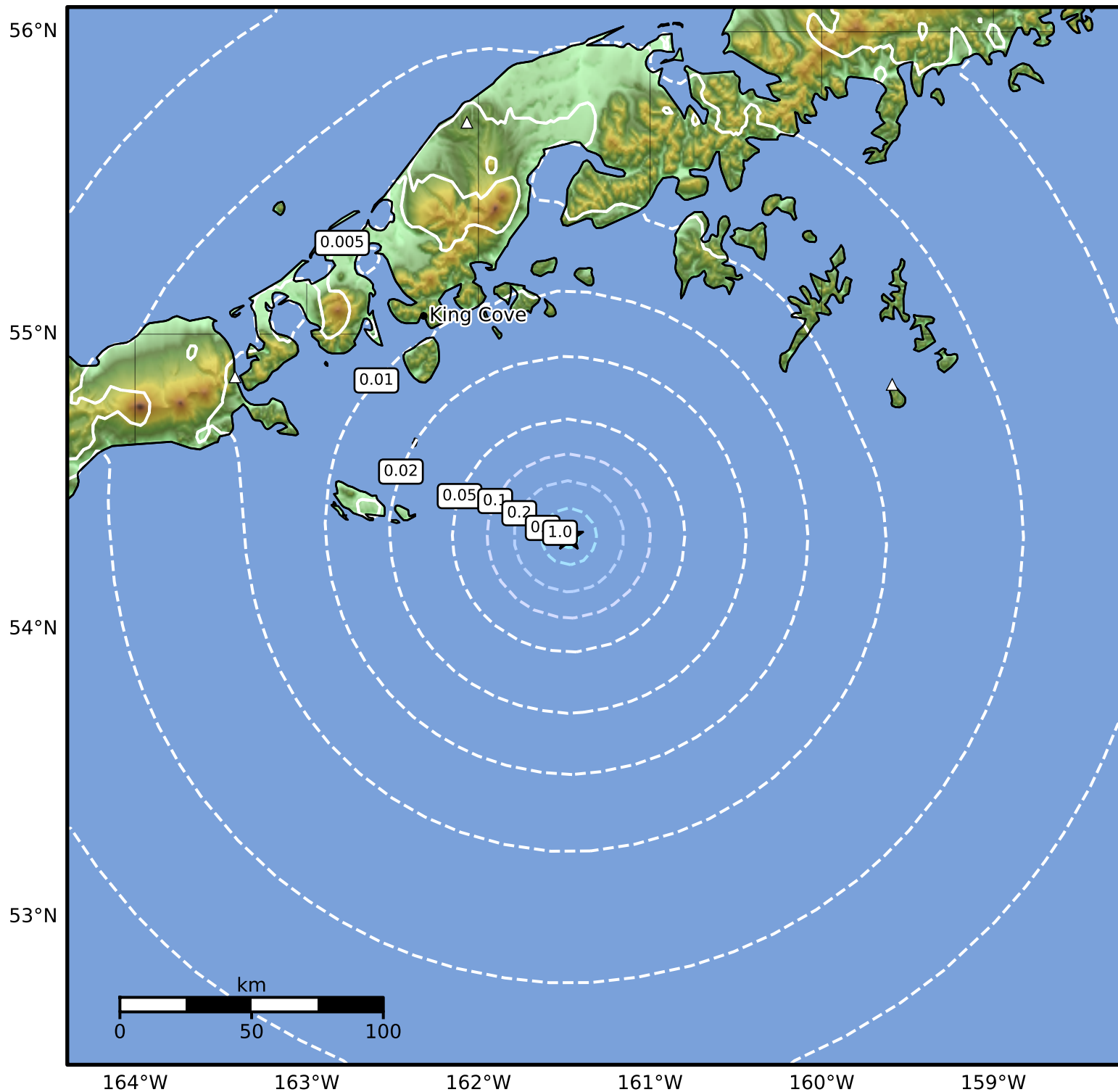


Peak Ground Acceleration Map Alaska Earthquake Center  
 ShakeMap: 98 km (61 miles) SSE of King Cove  
 Sep 04, 2025 18:54:59 UTC M3.5 N54.32 W161.47 Depth: 0.0km ID:ak025bcss83n



PGA (%g)	0.1	0.2	0.5	1	2	5	10	20	50	100	200
----------	-----	-----	-----	---	---	---	----	----	----	-----	-----

Scale based on Worden et al. (2012)

△ Seismic Instrument ○ Reported Intensity

★ Epicenter

Version 1: Processed 2025-09-04T18:58:15Z