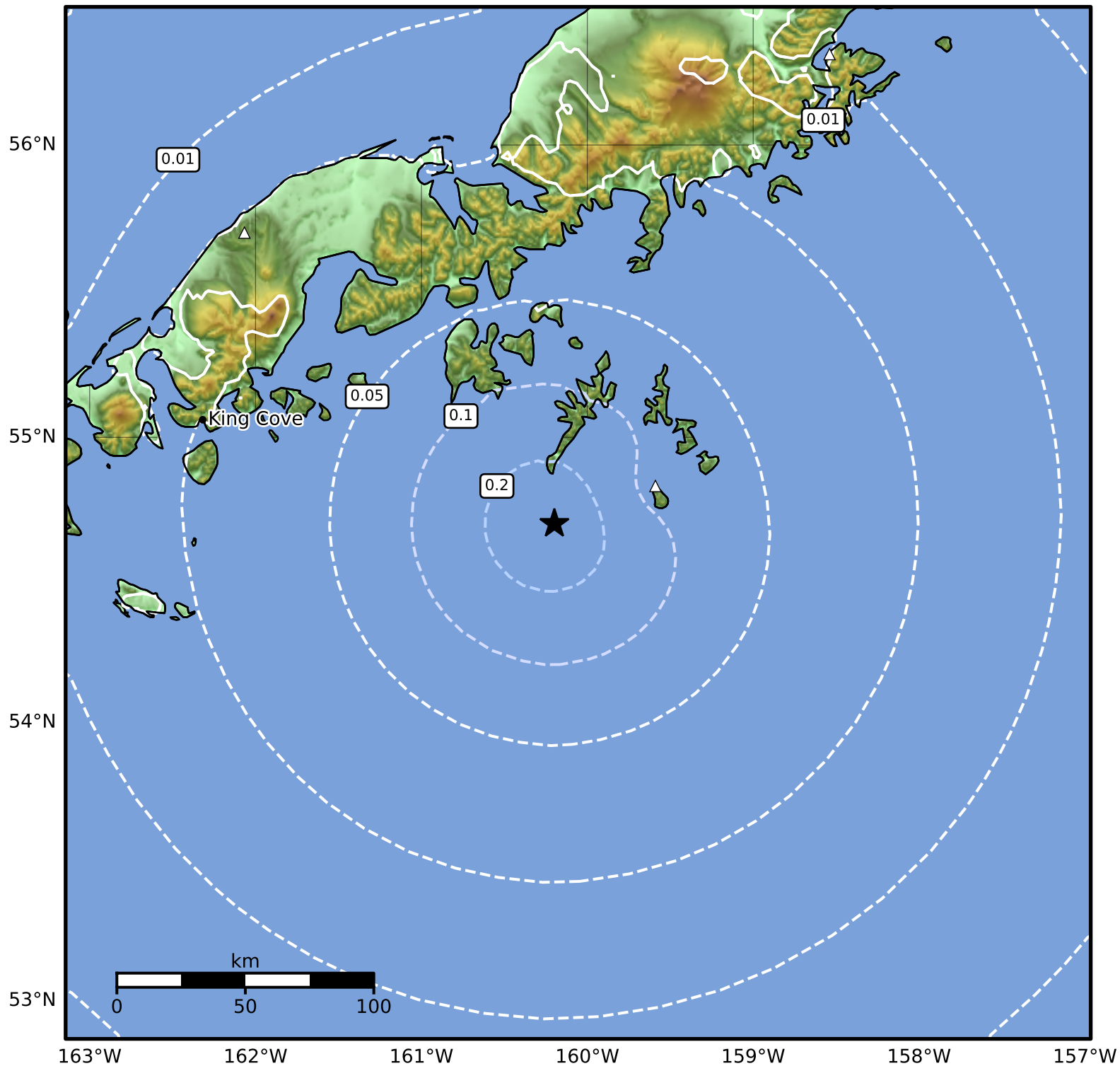


Peak Ground Acceleration Map Alaska Earthquake Center
ShakeMap: 73 km (45 miles) SSE of Sand Point
Oct 01, 2025 07:22:58 UTC M4.1 N54.70 W160.20 Depth: 38.2km ID:ak025cl9jyj1



PGA (%g)	0.1	0.2	0.5	1	2	5	10	20	50	100	200
----------	-----	-----	-----	---	---	---	----	----	----	-----	-----

Scale based on Worden et al. (2012)

△ Seismic Instrument ○ Reported Intensity

★ Epicenter

Version 1: Processed 2025-10-01T07:25:58Z