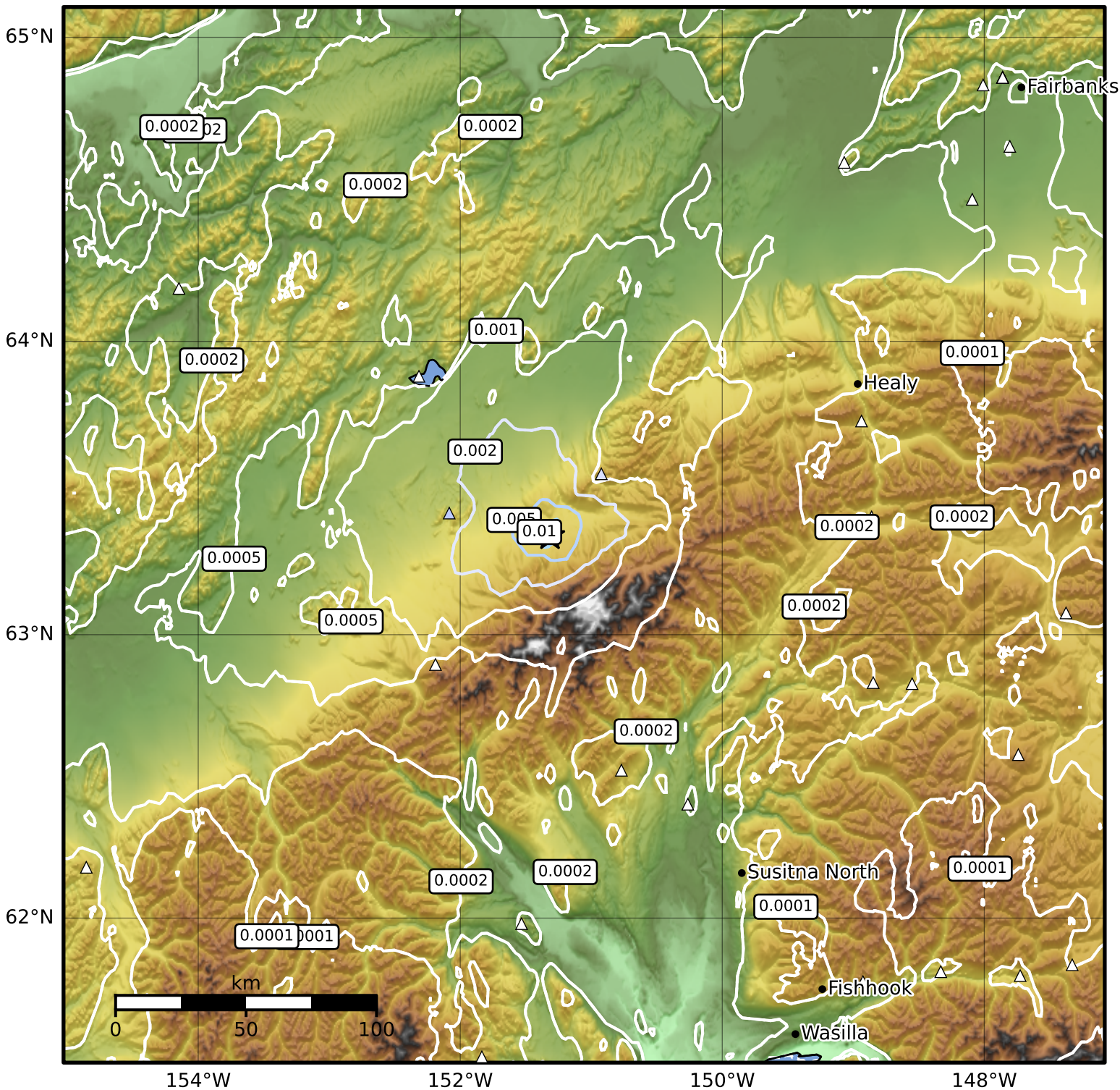


3.0 Second Peak Spectral Acceleration Map Alaska Earthquake Center
 ShakeMap: 72 km (45 miles) SE of Lake Minchumina
 Mar 05, 2026 12:36:32 UTC M3.7 N63.34 W151.31 Depth: 10.0km ID:a2026empvji



Scale based on Worden et al. (2012)

Version 2: Processed 2026-03-05T17:30:41Z

△ Seismic Instrument ○ Reported Intensity

★ Epicenter