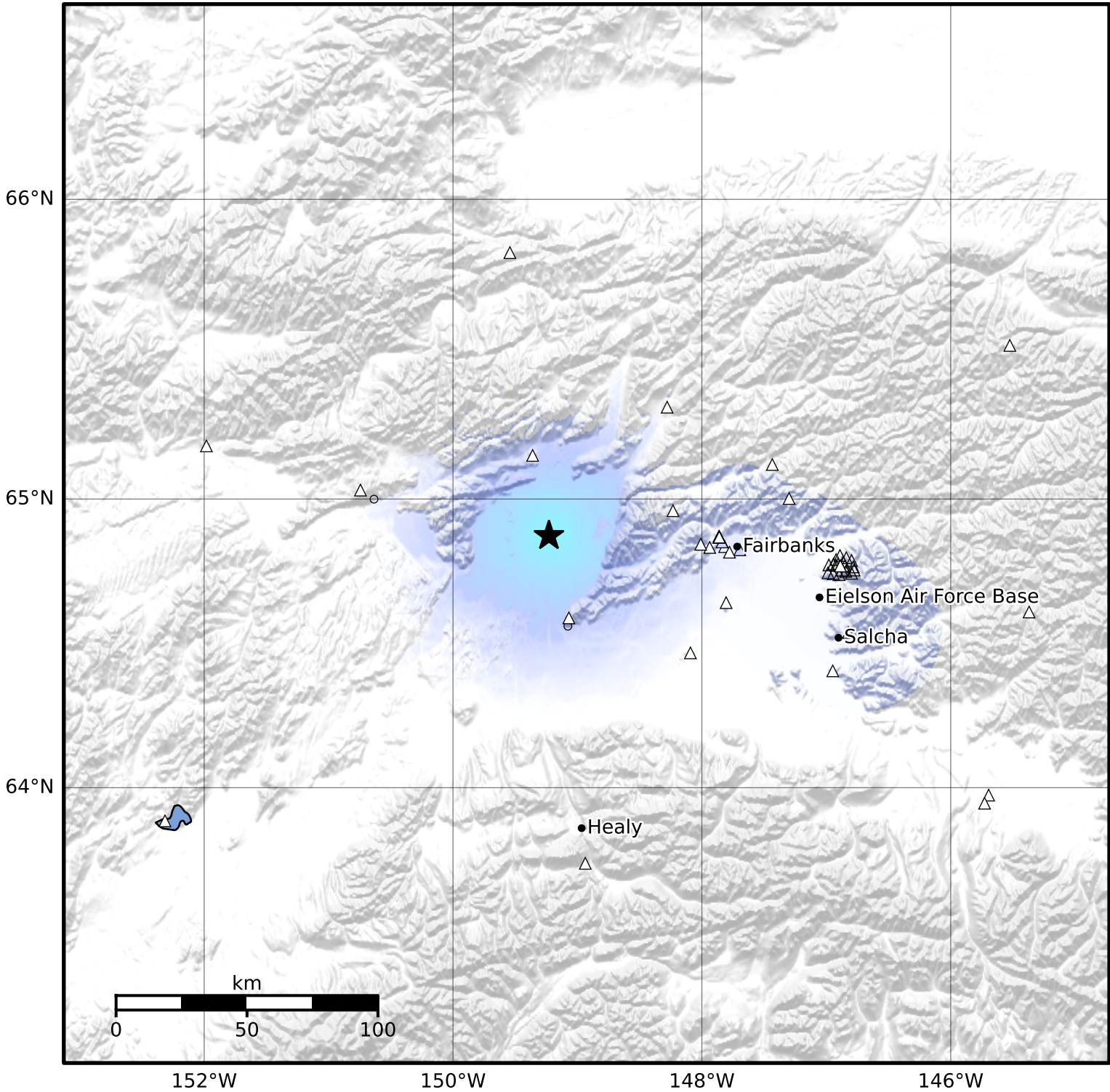


Macroseismic Intensity Map Alaska Earthquake Center  
 ShakeMap: 30 km (19 miles) SE of Minto  
 Mar 08, 2026 16:22:07 UTC M3.5 N64.87 W149.23 Depth: 6.3km ID:a2026eskmko



SHAKING	Not felt	Weak	Light	Moderate	Strong	Very strong	Severe	Violent	Extreme
DAMAGE	None	None	None	Very light	Light	Moderate	Moderate/heavy	Heavy	Very heavy
PGA(%g)	<0.0464	0.297	2.76	6.2	11.5	21.5	40.1	74.7	>139
PGV(cm/s)	<0.0215	0.135	1.41	4.65	9.64	20	41.4	85.8	>178
INTENSITY	<b>I</b>	<b>II-III</b>	<b>IV</b>	<b>V</b>	<b>VI</b>	<b>VII</b>	<b>VIII</b>	<b>IX</b>	<b>X+</b>

Scale based on Worden et al. (2012)

Version 2: Processed 2026-03-08T16:47:07Z

△ Seismic Instrument ○ Reported Intensity

★ Epicenter