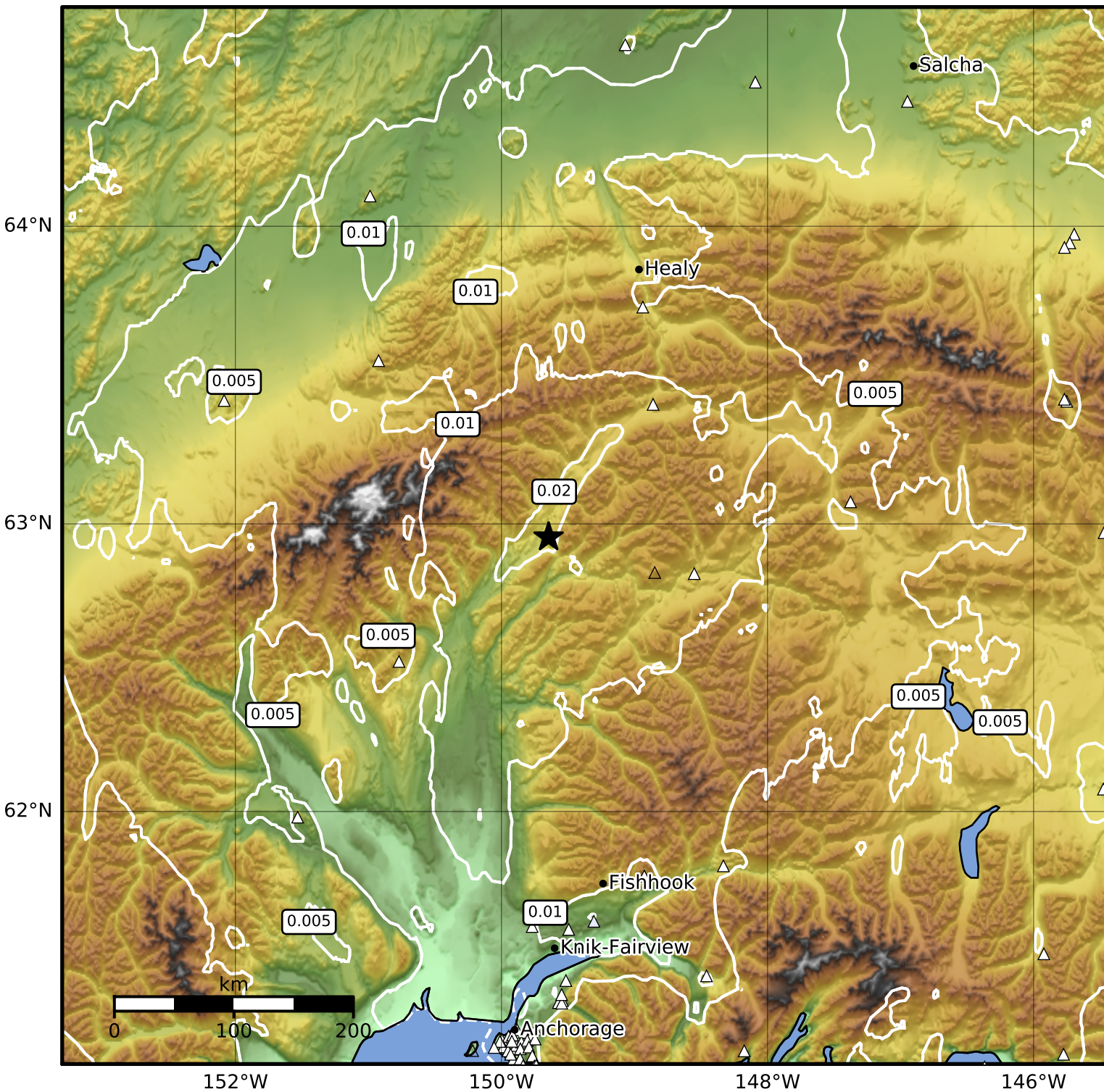


Peak Ground Velocity Map Alaska Earthquake Center
 ShakeMap: 60 km (37 miles) SW of Cantwell
 Jan 26, 2023 20:50:14 UTC M3.9 N62.95 W149.65 Depth: 76.5km ID:ak02317c6fu9



Scale based on Worden et al. (2012)

△ Seismic Instrument ○ Reported Intensity

★ Epicenter

Version 2: Processed 2023-01-26T21:06:01Z