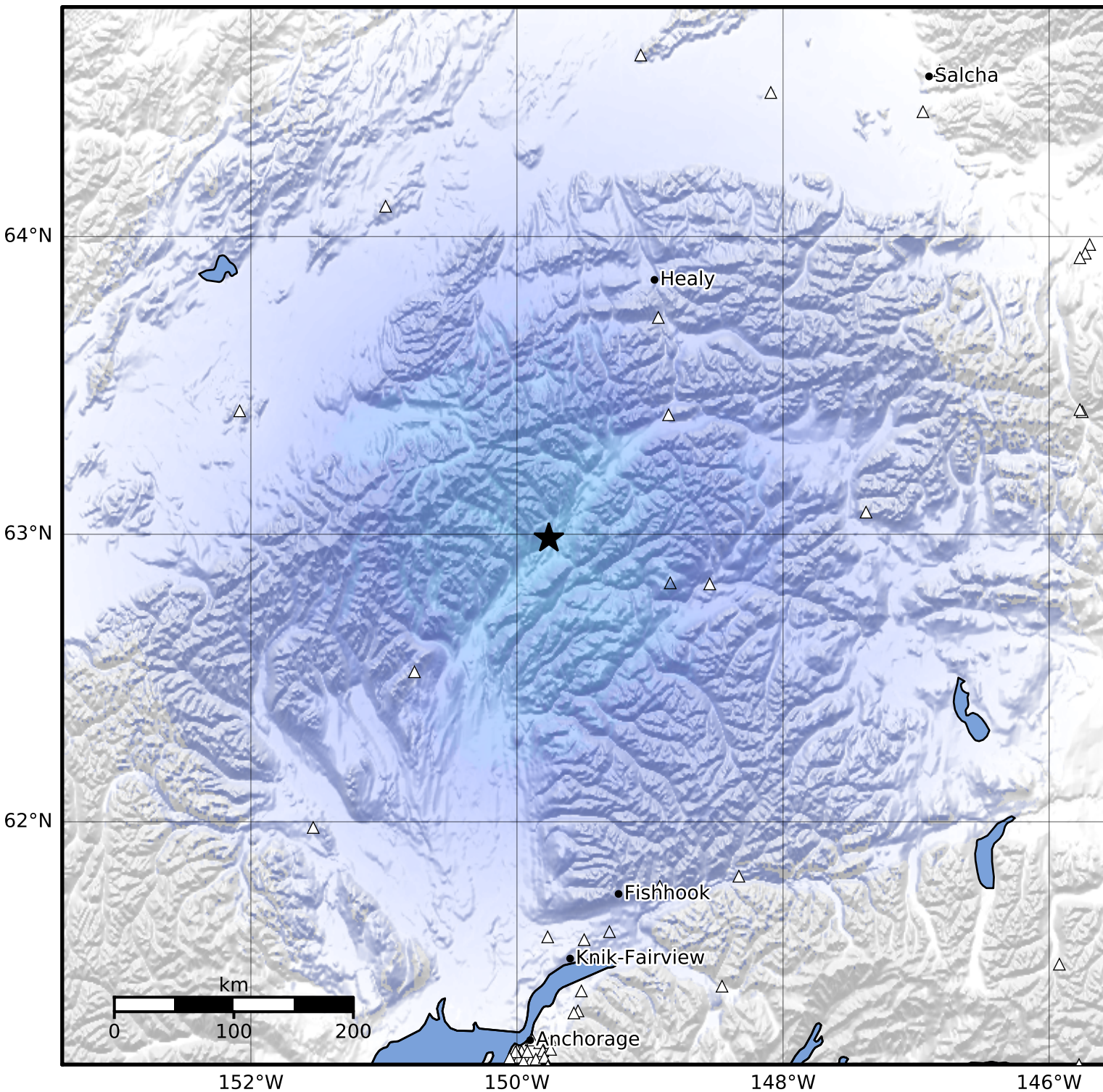


Macroseismic Intensity Map Alaska Earthquake Center
 ShakeMap: 60 km (37 miles) SW of Cantwell
 May 28, 2023 11:30:58 UTC M3.8 N62.99 W149.76 Depth: 74.8km ID:ak0236sy9ooj



| SHAKING | Not felt | Weak | Light | Moderate | Strong | Very strong | Severe | Violent | Extreme |
|-----------|----------|--------|-------|------------|--------|-------------|----------------|---------|------------|
| DAMAGE | None | None | None | Very light | Light | Moderate | Moderate/heavy | Heavy | Very heavy |
| PGA(%g) | <0.0464 | 0.297 | 2.76 | 6.2 | 11.5 | 21.5 | 40.1 | 74.7 | >139 |
| PGV(cm/s) | <0.0215 | 0.135 | 1.41 | 4.65 | 9.64 | 20 | 41.4 | 85.8 | >178 |
| INTENSITY | I | II-III | IV | V | VI | VII | VIII | IX | X+ |

Scale based on Worden et al. (2012)

Version 2: Processed 2023-05-28T18:08:08Z

△ Seismic Instrument ○ Reported Intensity

★ Epicenter