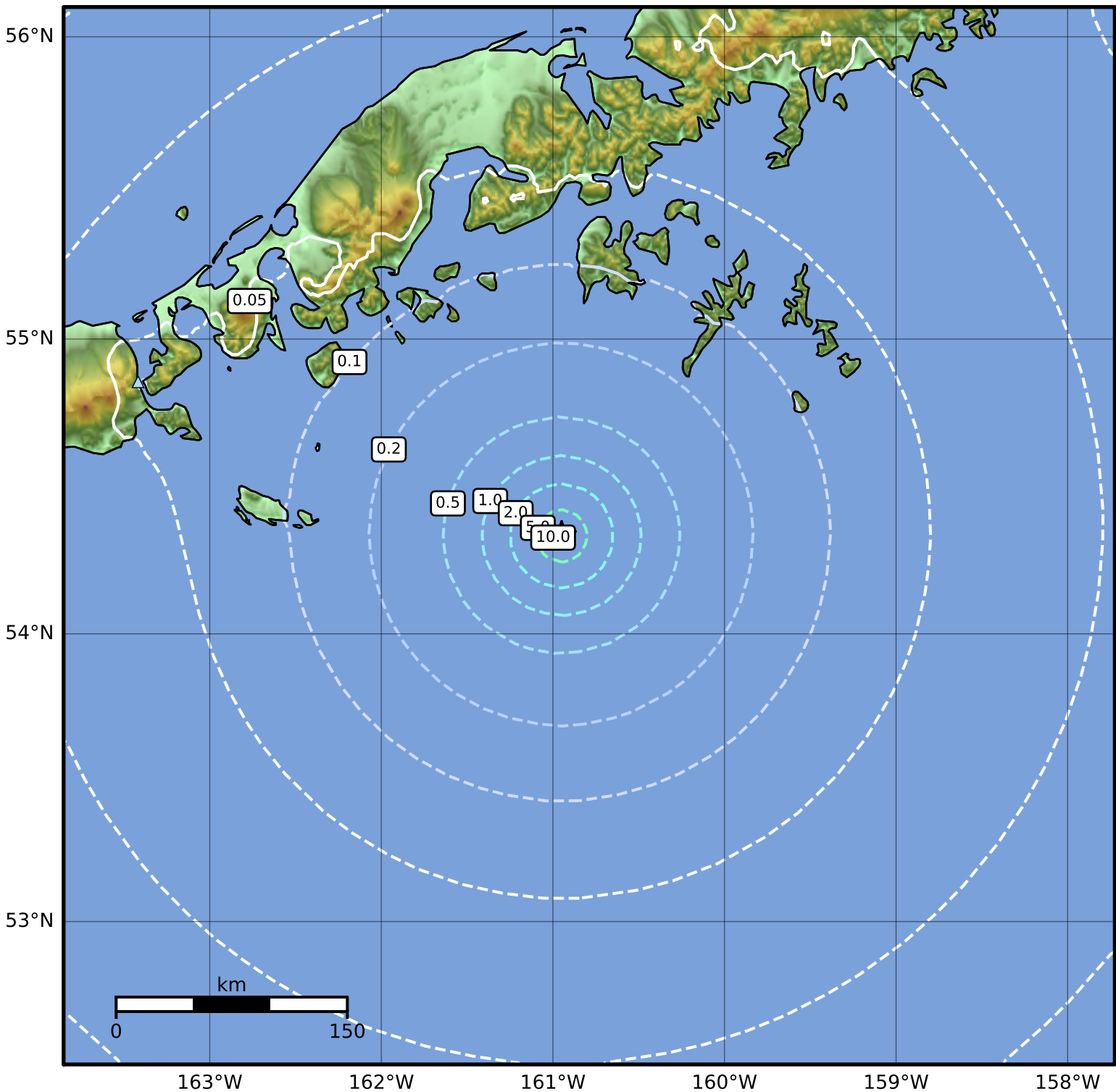


Peak Ground Acceleration Map Alaska Earthquake Center  
ShakeMap: 115 km (71 miles) SSW of Sand Point  
Sep 10, 2023 13:03:55 UTC M4.7 N54.33 W160.95 Depth: 4.8km ID:ak023bmmqaop



PGA (%g)	0.1	0.2	0.5	1	2	5	10	20	50	100	200
----------	-----	-----	-----	---	---	---	----	----	----	-----	-----

Scale based on Worden et al. (2012)

△ Seismic Instrument ○ Reported Intensity

★ Epicenter

Version 2: Processed 2023-09-10T13:21:40Z