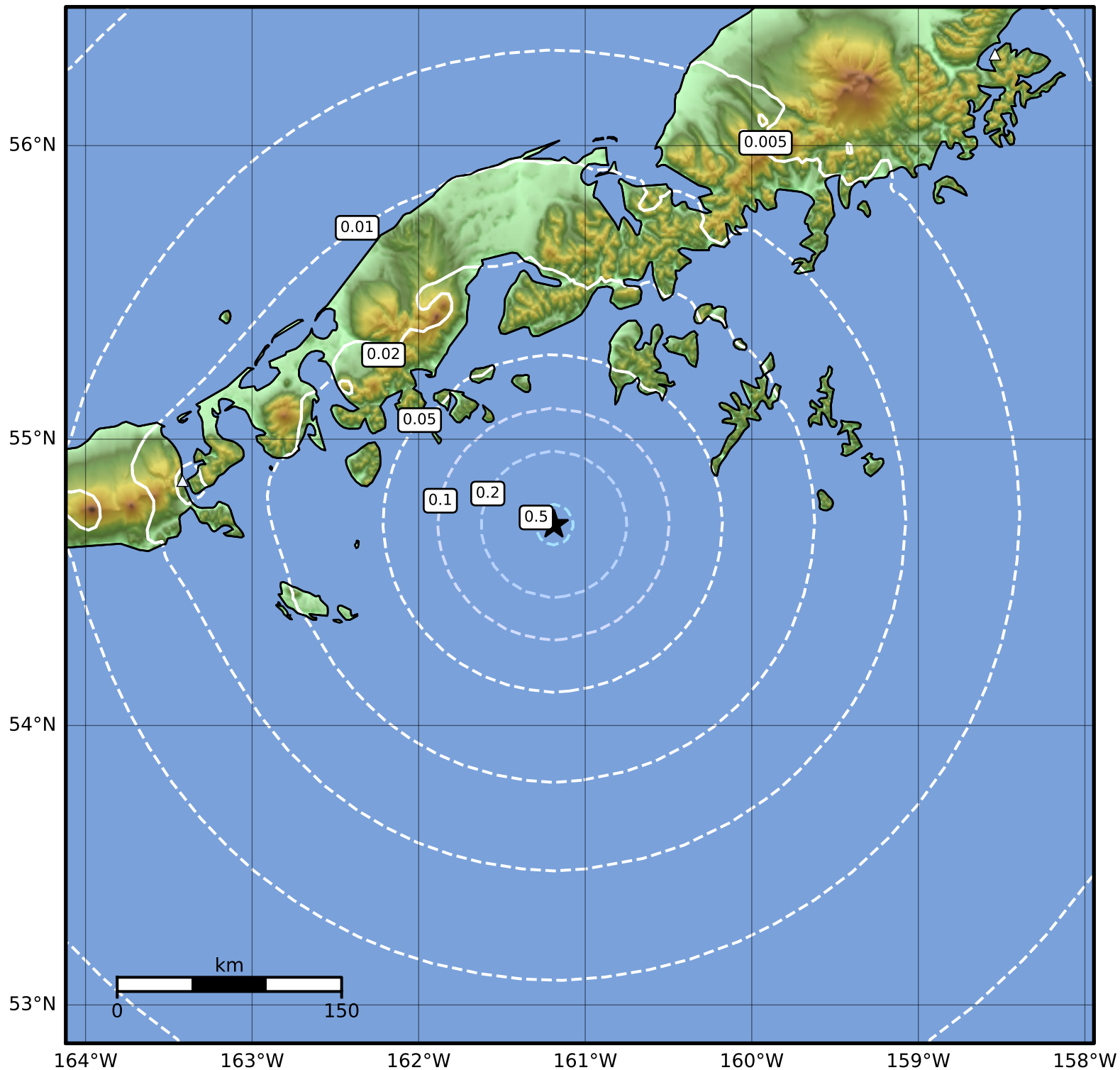


Peak Ground Acceleration Map Alaska Earthquake Center  
ShakeMap: 82 km (51 miles) ESE of King Cove  
Dec 10, 2023 23:19:34 UTC M3.9 N54.70 W161.19 Depth: 21.5km ID:ak023ftaoi2b



PGA (%g)	0.1	0.2	0.5	1	2	5	10	20	50	100	200
----------	-----	-----	-----	---	---	---	----	----	----	-----	-----

Scale based on Worden et al. (2012)

Version 2: Processed 2023-12-11T07:35:09Z

△ Seismic Instrument ○ Reported Intensity

★ Epicenter