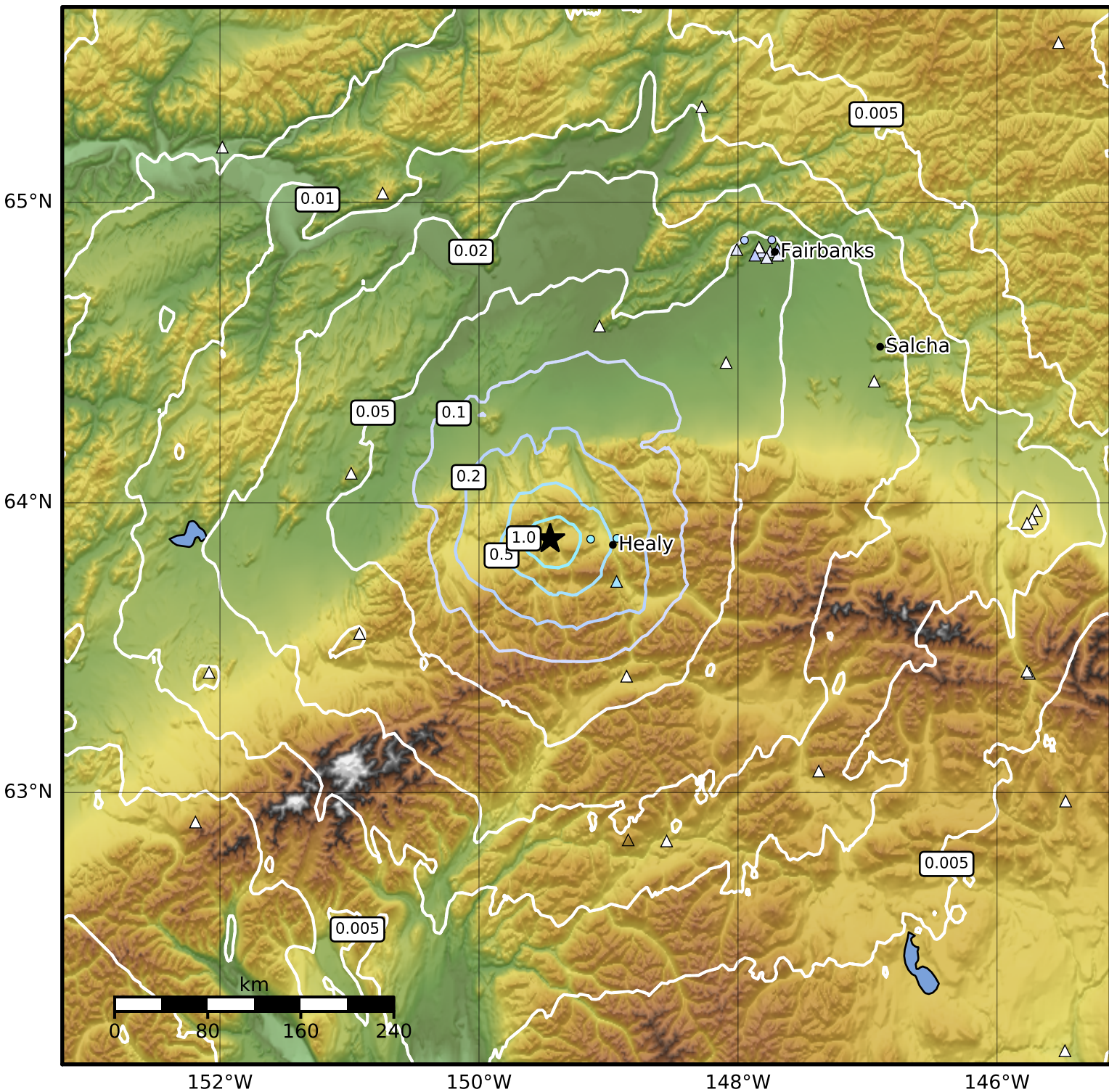


Peak Ground Acceleration Map Alaska Earthquake Center  
 ShakeMap: 24 km (15 miles) W of Healy  
 Dec 12, 2023 15:13:26 UTC M3.5 N63.88 W149.45 Depth: 11.3km ID:ak023fwgyf9b



PGA (%g)	0.1	0.2	0.5	1	2	5	10	20	50	100	200
----------	-----	-----	-----	---	---	---	----	----	----	-----	-----

Scale based on Worden et al. (2012)

△ Seismic Instrument ○ Reported Intensity

★ Epicenter

Version 2: Processed 2023-12-12T21:04:48Z