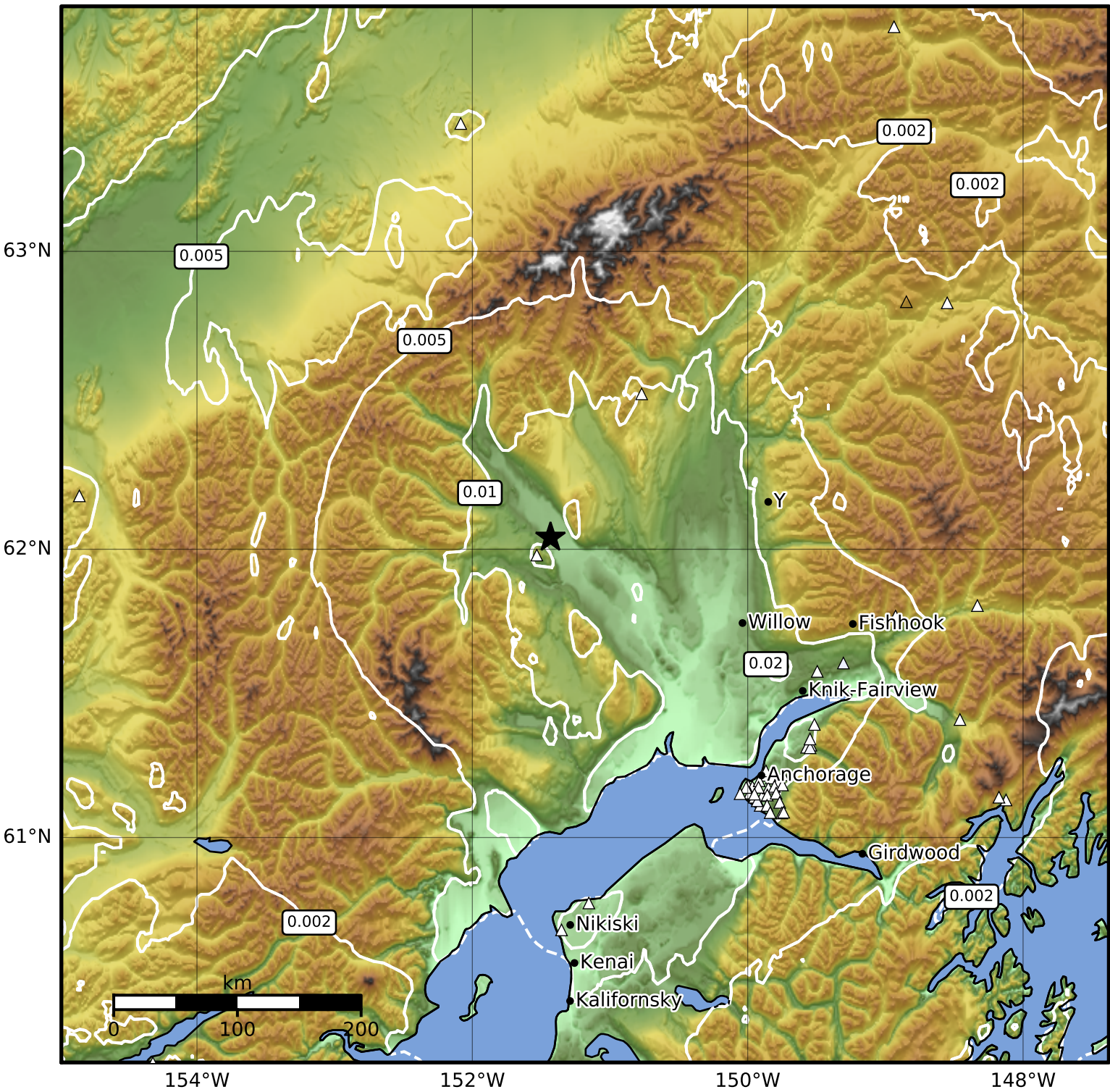


Peak Ground Velocity Map Alaska Earthquake Center
 ShakeMap: 16 km (10 miles) NW of Skwentna
 Mar 19, 2024 12:16:25 UTC M3.6 N62.04 W151.43 Depth: 88.3km ID:ak0243mup3od



| PGV (cm/s) | 0.1 | 0.2 | 0.5 | 1 | 2 | 5 | 10 | 20 | 50 | 100 | 200 |
|------------|-----|-----|-----|---|---|---|----|----|----|-----|-----|
|------------|-----|-----|-----|---|---|---|----|----|----|-----|-----|

Scale based on Worden et al. (2012)

Version 2: Processed 2024-03-19T16:05:58Z

△ Seismic Instrument ○ Reported Intensity ★ Epicenter