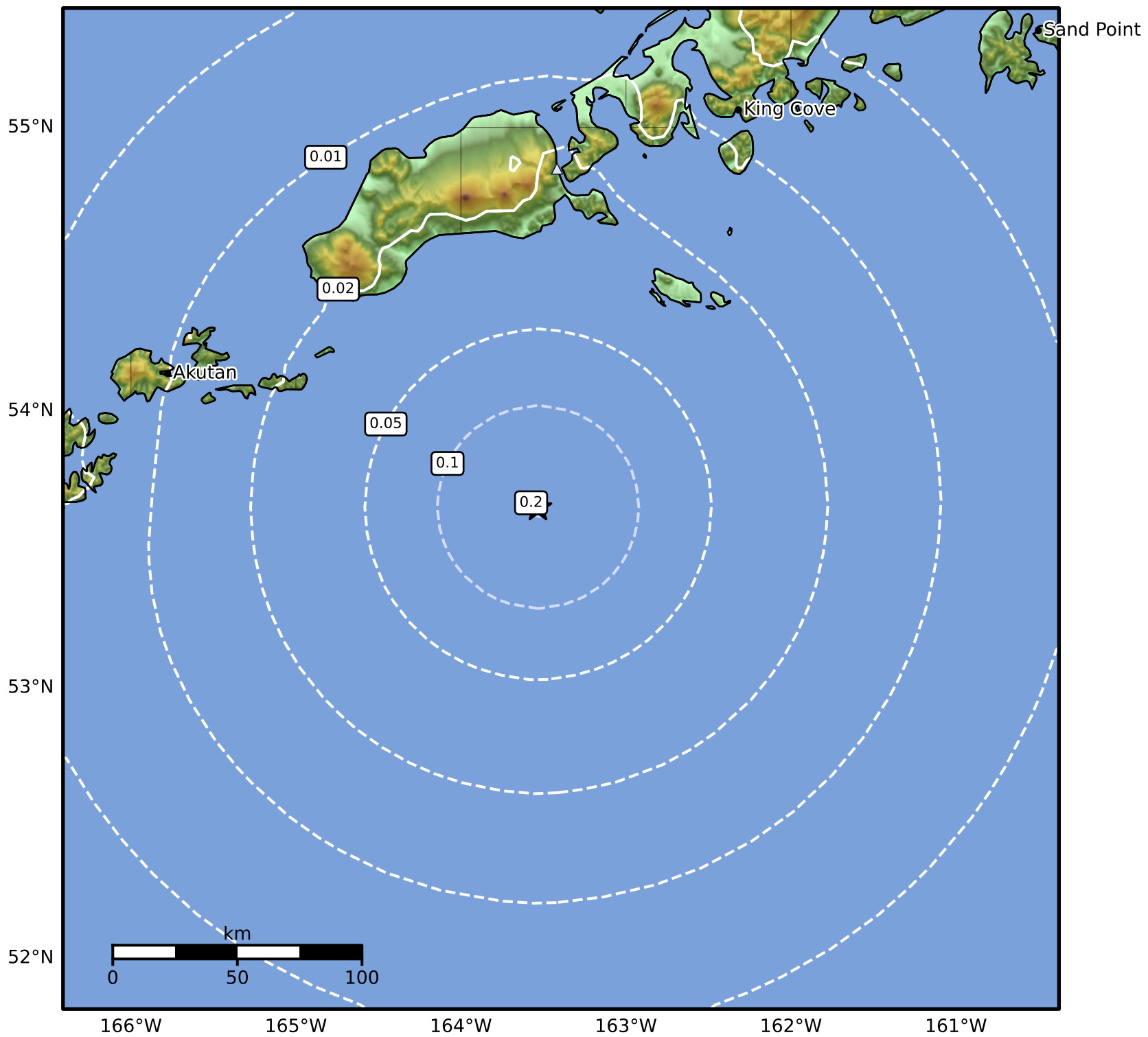


Peak Ground Acceleration Map Alaska Earthquake Center  
 ShakeMap: 133 km (83 miles) S of False Pass  
 Jun 10, 2024 08:47:49 UTC M3.8 N53.65 W163.53 Depth: 40.5km ID:ak0247g23v7z



PGA (%g)	0.1	0.2	0.5	1	2	5	10	20	50	100	200

Scale based on Worden et al. (2012)

Version 2: Processed 2024-06-10T15:50:08Z

△ Seismic Instrument ○ Reported Intensity

★ Epicenter