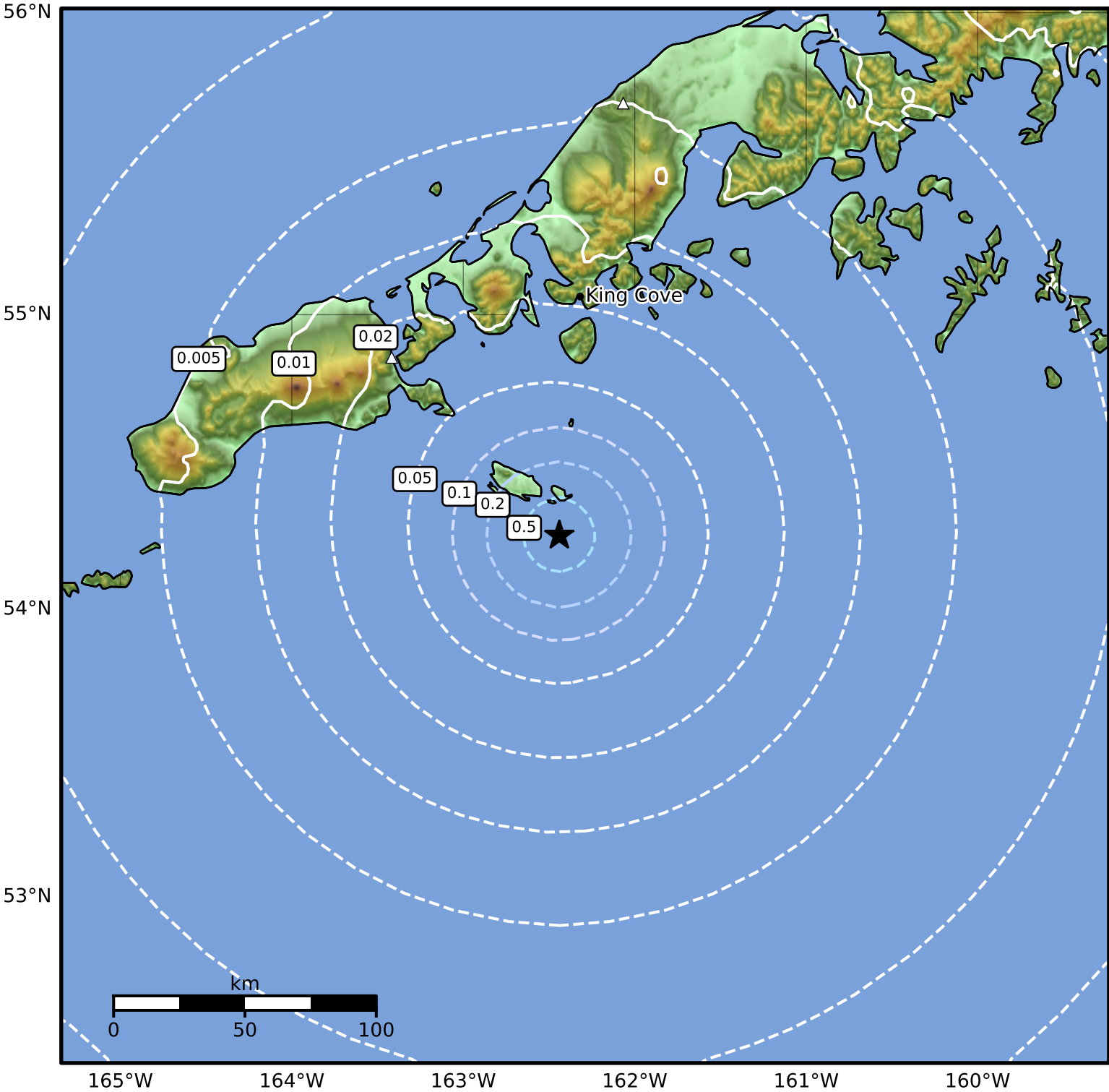


Peak Ground Acceleration Map Alaska Earthquake Center
 ShakeMap: 90 km (56 miles) S of King Cove
 Jul 24, 2024 09:07:43 UTC M3.6 N54.25 W162.44 Depth: 13.3km ID:ak0249gu3zc6



PGA (%g)	0.1	0.2	0.5	1	2	5	10	20	50	100	200
----------	-----	-----	-----	---	---	---	----	----	----	-----	-----

Scale based on Worden et al. (2012)

Version 2: Processed 2024-07-24T10:16:39Z

△ Seismic Instrument ○ Reported Intensity ★ Epicenter