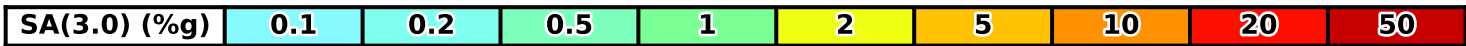
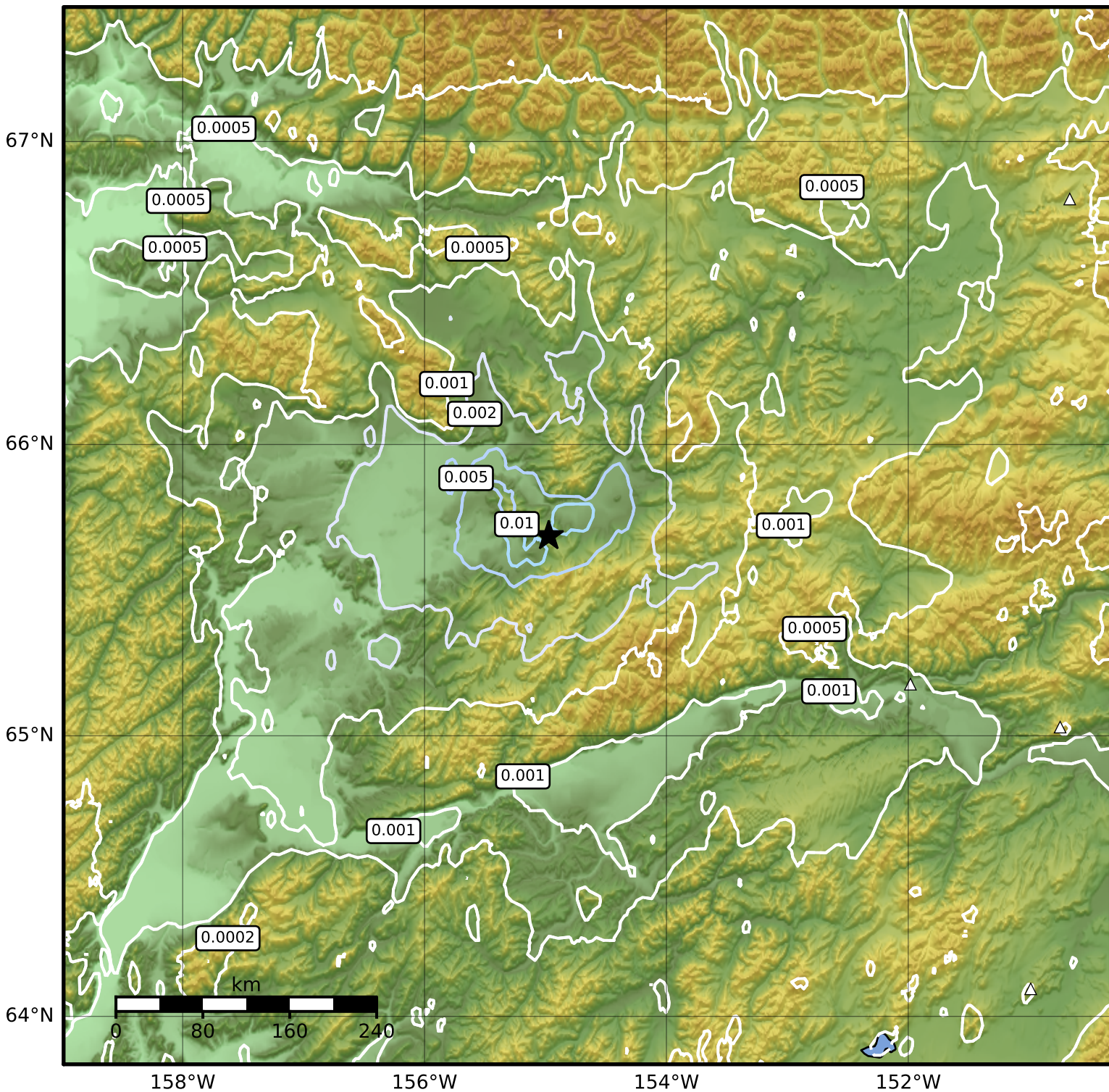


3.0 Second Peak Spectral Acceleration Map Alaska Earthquake Center
ShakeMap: 51 km (32 miles) SW of Hughes
Jan 09, 2024 06:55:37 UTC M3.8 N65.69 W154.97 Depth: 20.5km ID:ak024ezql9j



Scale based on Worden et al. (2012)

△ Seismic Instrument ○ Reported Intensity

★ Epicenter

Version 2: Processed 2024-01-09T07:12:41Z