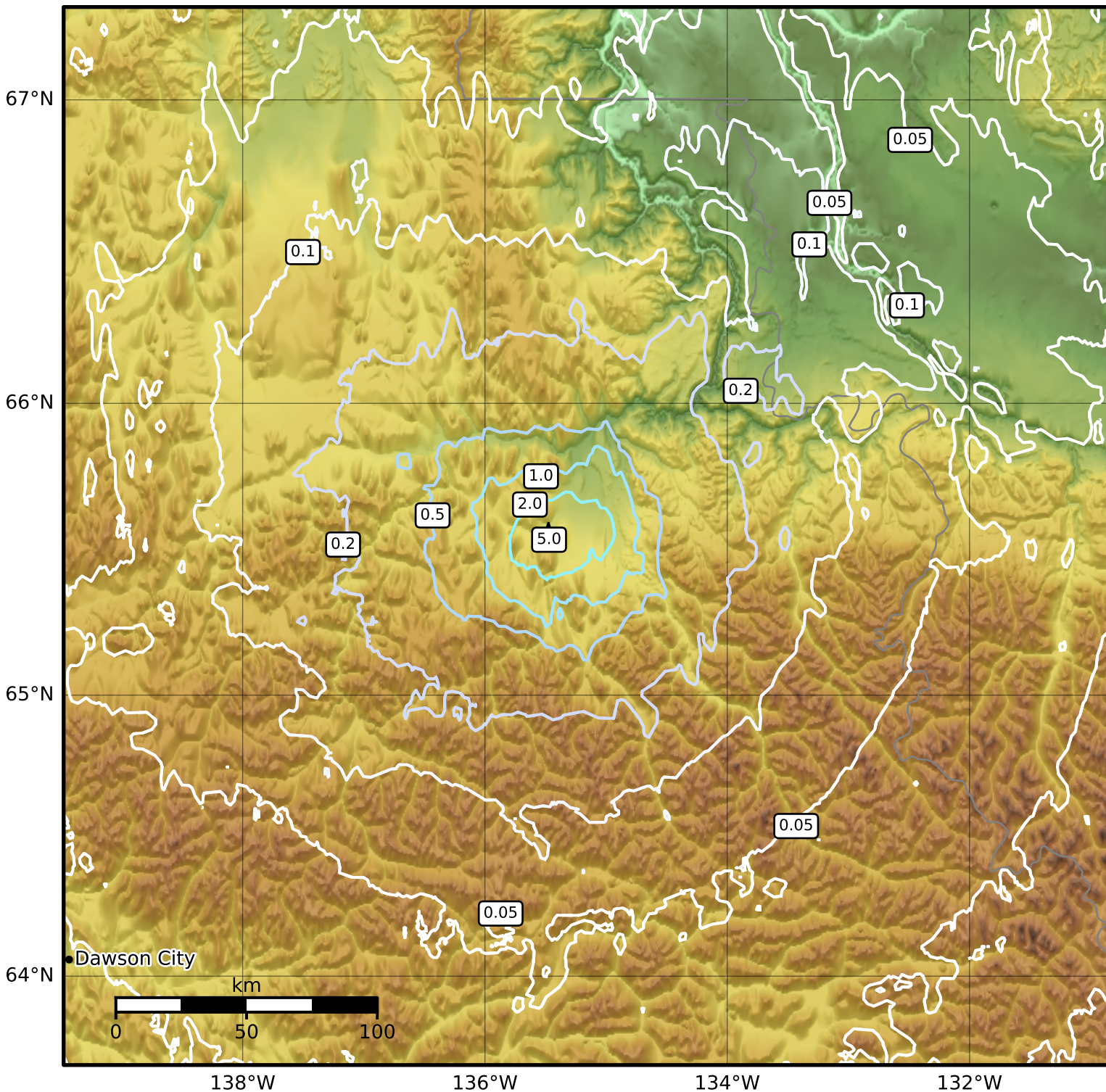


0.3 Second Peak Spectral Acceleration Map Alaska Earthquake Center
 ShakeMap: 254 km (158 miles) NE of Dawson City
 Dec 07, 2024 05:59:14 UTC M4.2 N65.54 W135.48 Depth: 15.3km ID:ak024fpp4jc1



SA(0.3) (%g)	0.1	0.2	0.5	1	2	5	10	20	50	100	200
---------------------	------------	------------	------------	----------	----------	----------	-----------	-----------	-----------	------------	------------

Scale based on Worden et al. (2012)

Version 2: Processed 2024-12-07T17:08:49Z

△ Seismic Instrument ○ Reported Intensity

★ Epicenter