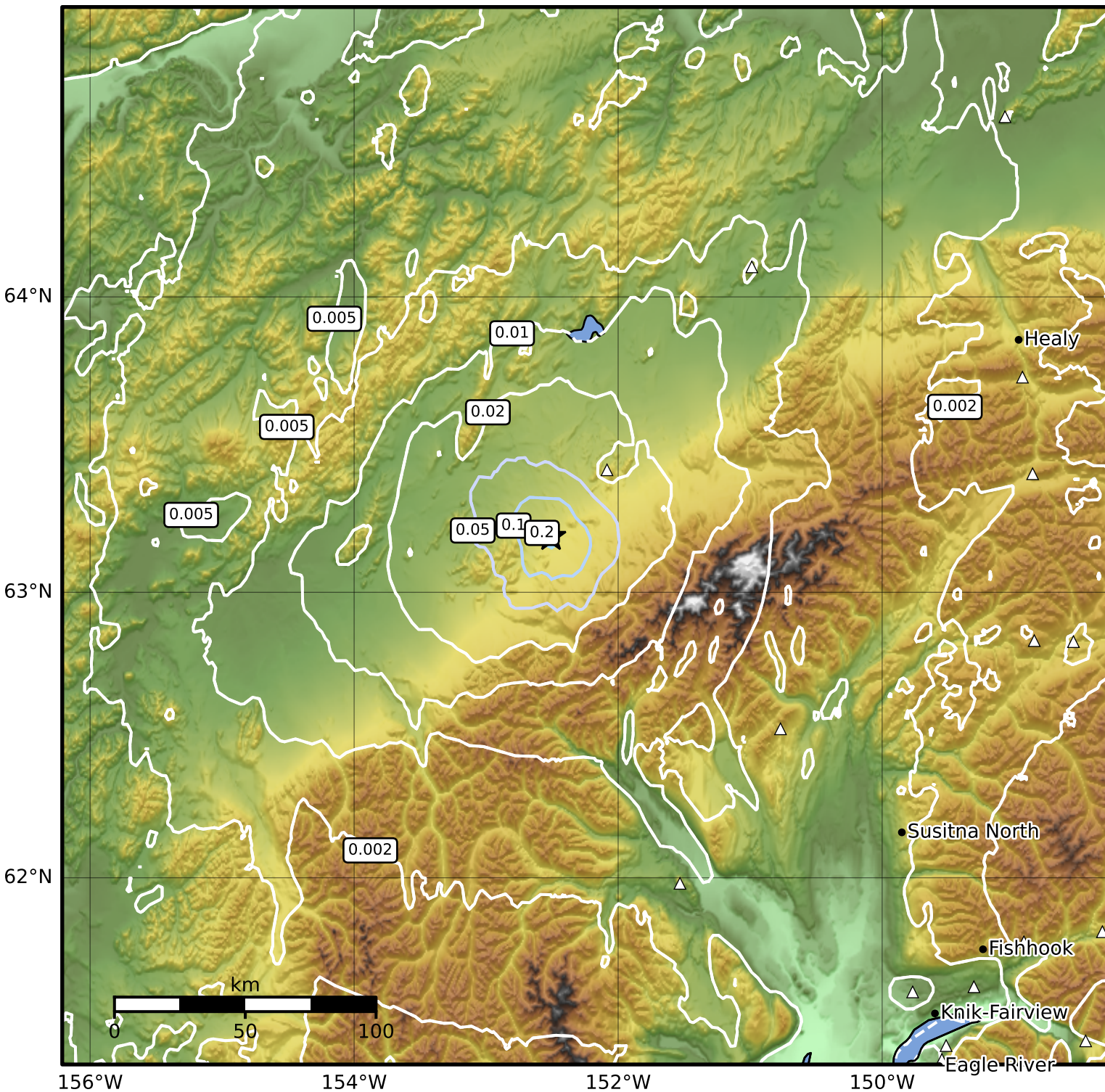


Peak Ground Velocity Map Alaska Earthquake Center
 ShakeMap: 44 km (27 miles) ESE of Telida
 Dec 15, 2024 22:12:11 UTC M3.5 N63.19 W152.51 Depth: 15.8km ID:ak024g379Inp



PGV (cm/s)	0.1	0.2	0.5	1	2	5	10	20	50	100	200
------------	-----	-----	-----	---	---	---	----	----	----	-----	-----

Scale based on Worden et al. (2012)

Version 1: Processed 2024-12-15T22:24:35Z

△ Seismic Instrument ○ Reported Intensity

★ Epicenter