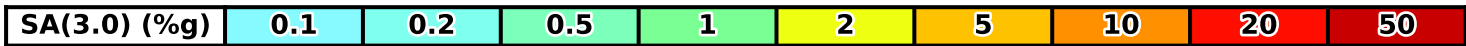
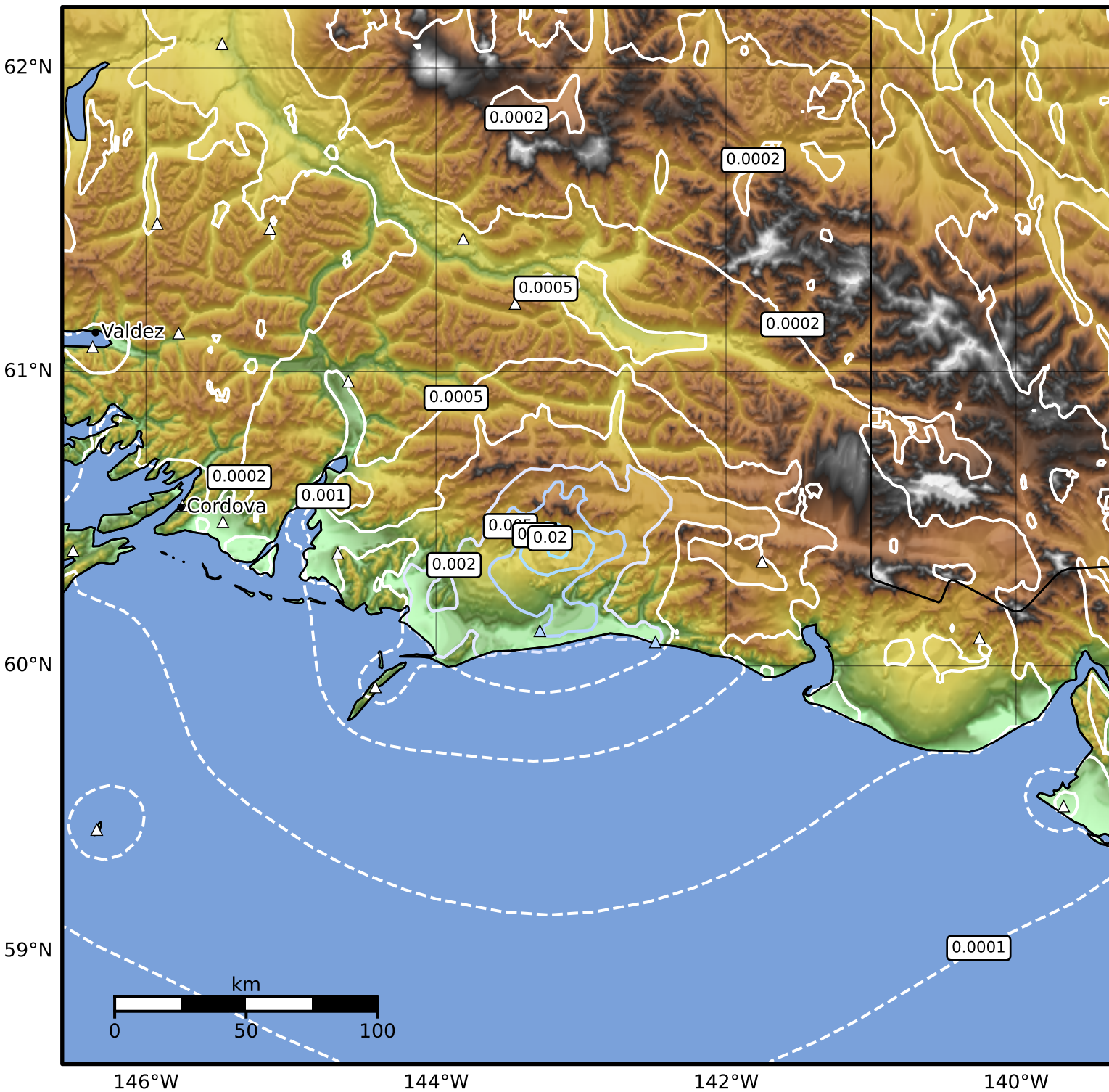


3.0 Second Peak Spectral Acceleration Map Alaska Earthquake Center
 ShakeMap: 59 km (37 miles) NW of Cape Yakataga
 Dec 26, 2024 04:52:28 UTC M3.6 N60.44 W143.17 Depth: 8.1km ID:ak024gl3p81j



Scale based on Worden et al. (2012)

Version 2: Processed 2024-12-26T05:53:46Z

△ Seismic Instrument ○ Reported Intensity

★ Epicenter