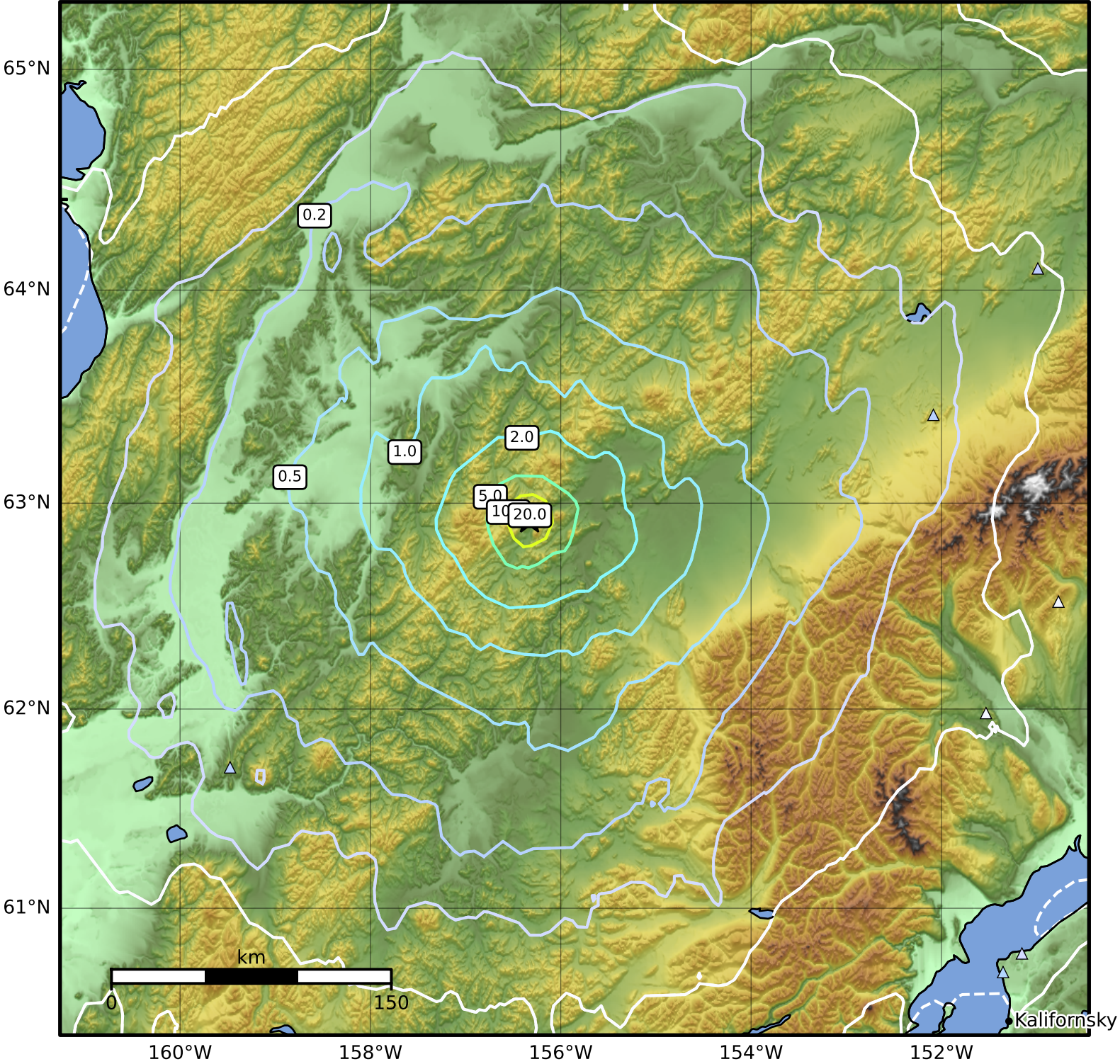


Peak Ground Acceleration Map Alaska Earthquake Center
 ShakeMap: 15 km (9 miles) WSW of Takotna
 Jan 30, 2025 04:40:08 UTC M5.2 N62.92 W156.33 Depth: 8.8km ID:ak0251doqqfp



PGA (%g)	0.1	0.2	0.5	1	2	5	10	20	50	100	200
----------	-----	-----	-----	---	---	---	----	----	----	-----	-----

Scale based on Worden et al. (2012)

Version 6: Processed 2025-01-30T06:12:05Z

△ Seismic Instrument ○ Reported Intensity

★ Epicenter