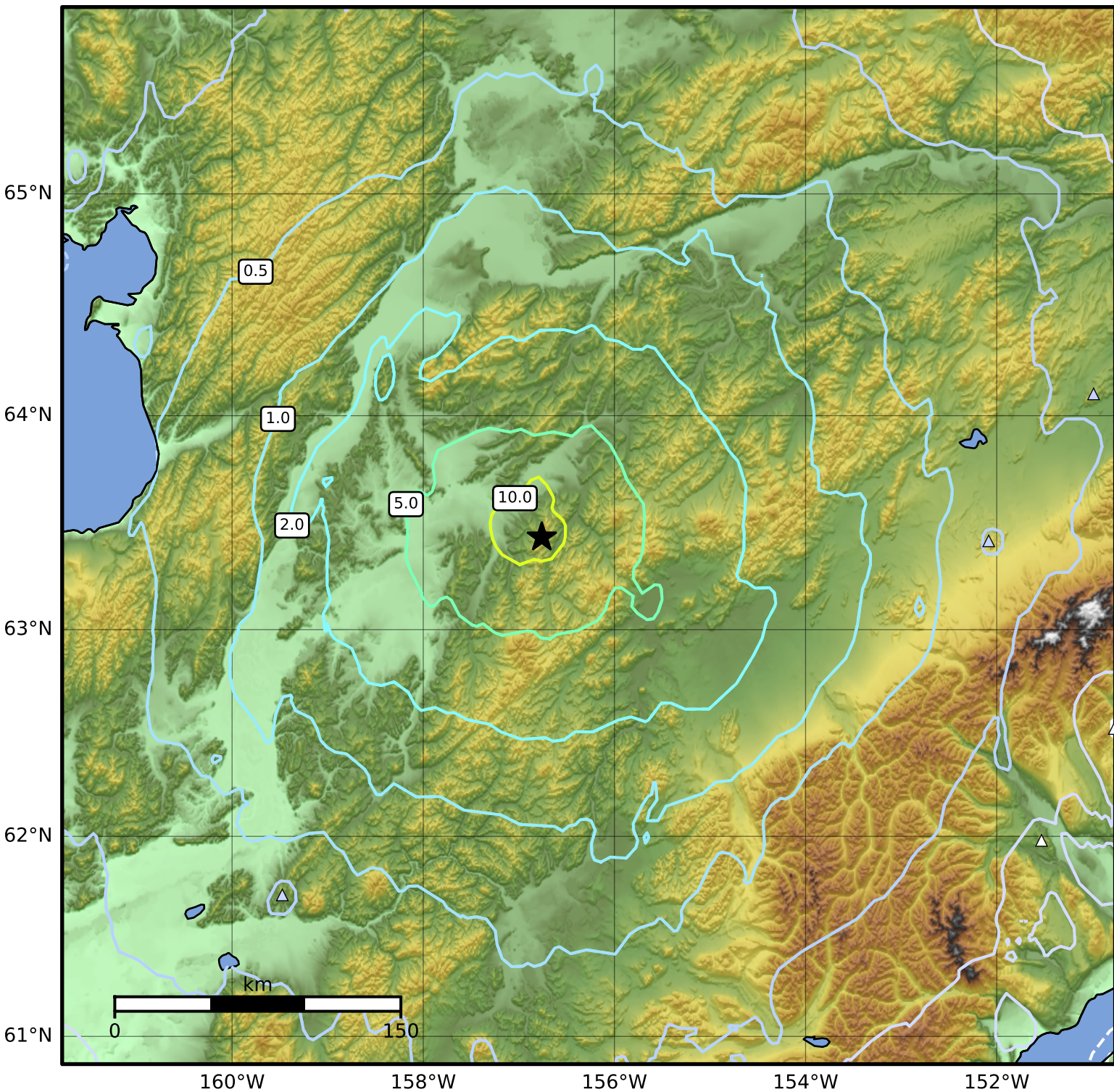


Peak Ground Acceleration Map Alaska Earthquake Center  
ShakeMap: 60 km (37 miles) NW of Takotna  
Jan 30, 2025 04:40:19 UTC M5.6 N63.44 W156.76 Depth: 41.2km ID:ak0251dorfbc



PGA (%g)	0.1	0.2	0.5	1	2	5	10	20	50	100	200
----------	-----	-----	-----	---	---	---	----	----	----	-----	-----

Scale based on Worden et al. (2012)

Version 1: Processed 2025-01-30T05:09:34Z

△ Seismic Instrument ○ Reported Intensity

★ Epicenter