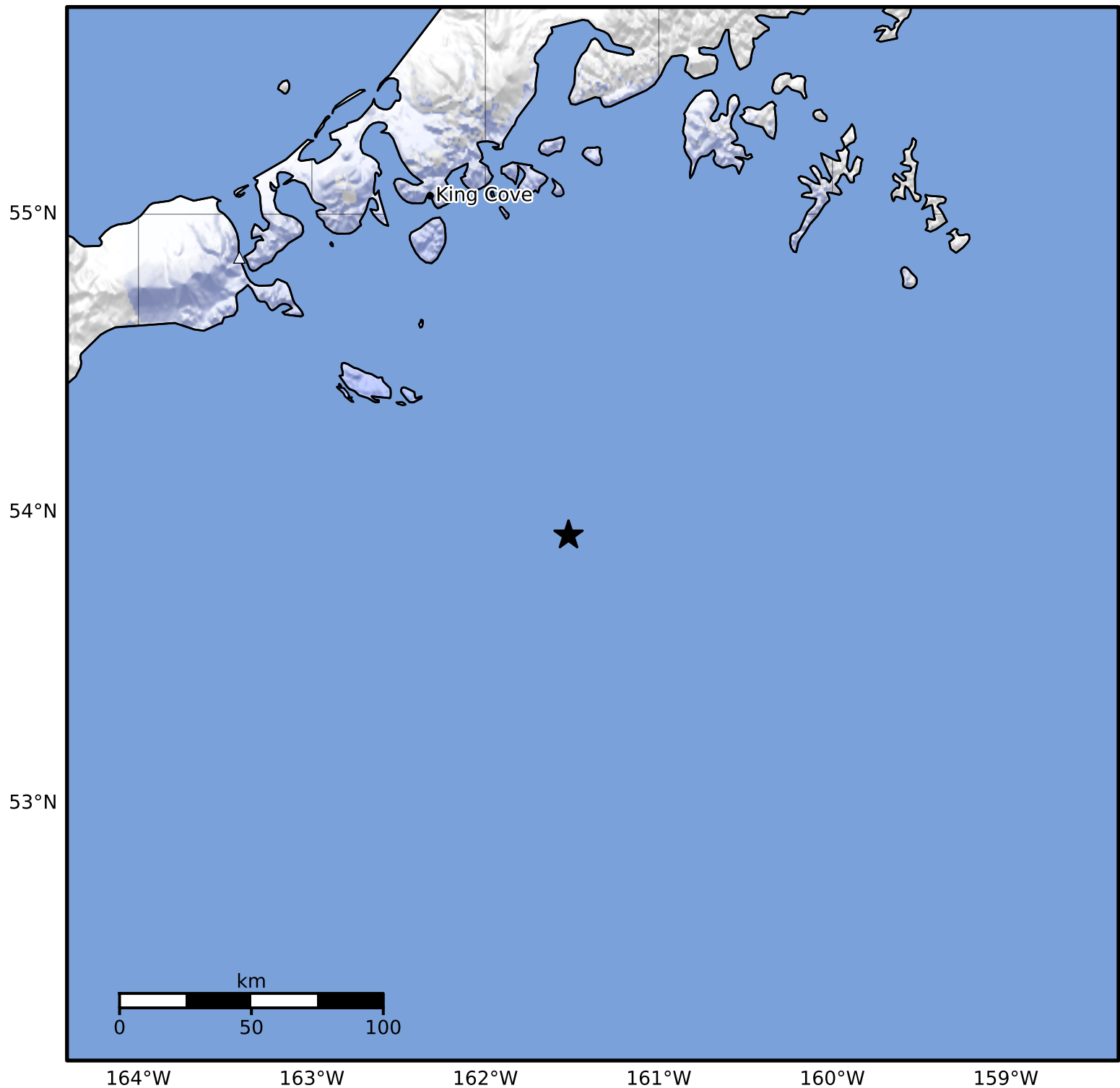


Macroseismic Intensity Map Alaska Earthquake Center
 ShakeMap: 136 km (84 miles) SSE of King Cove
 Feb 11, 2025 01:09:52 UTC M4.1 N53.92 W161.52 Depth: 33.0km ID:ak0251xh81r4



SHAKING	Not felt	Weak	Light	Moderate	Strong	Very strong	Severe	Violent	Extreme
DAMAGE	None	None	None	Very light	Light	Moderate	Moderate/heavy	Heavy	Very heavy
PGA(%g)	<0.0464	0.297	2.76	6.2	11.5	21.5	40.1	74.7	>139
PGV(cm/s)	<0.0215	0.135	1.41	4.65	9.64	20	41.4	85.8	>178
INTENSITY	I	II-III	IV	V	VI	VII	VIII	IX	X+

Scale based on Worden et al. (2012)

Version 2: Processed 2025-02-11T05:41:44Z

△ Seismic Instrument ○ Reported Intensity

★ Epicenter