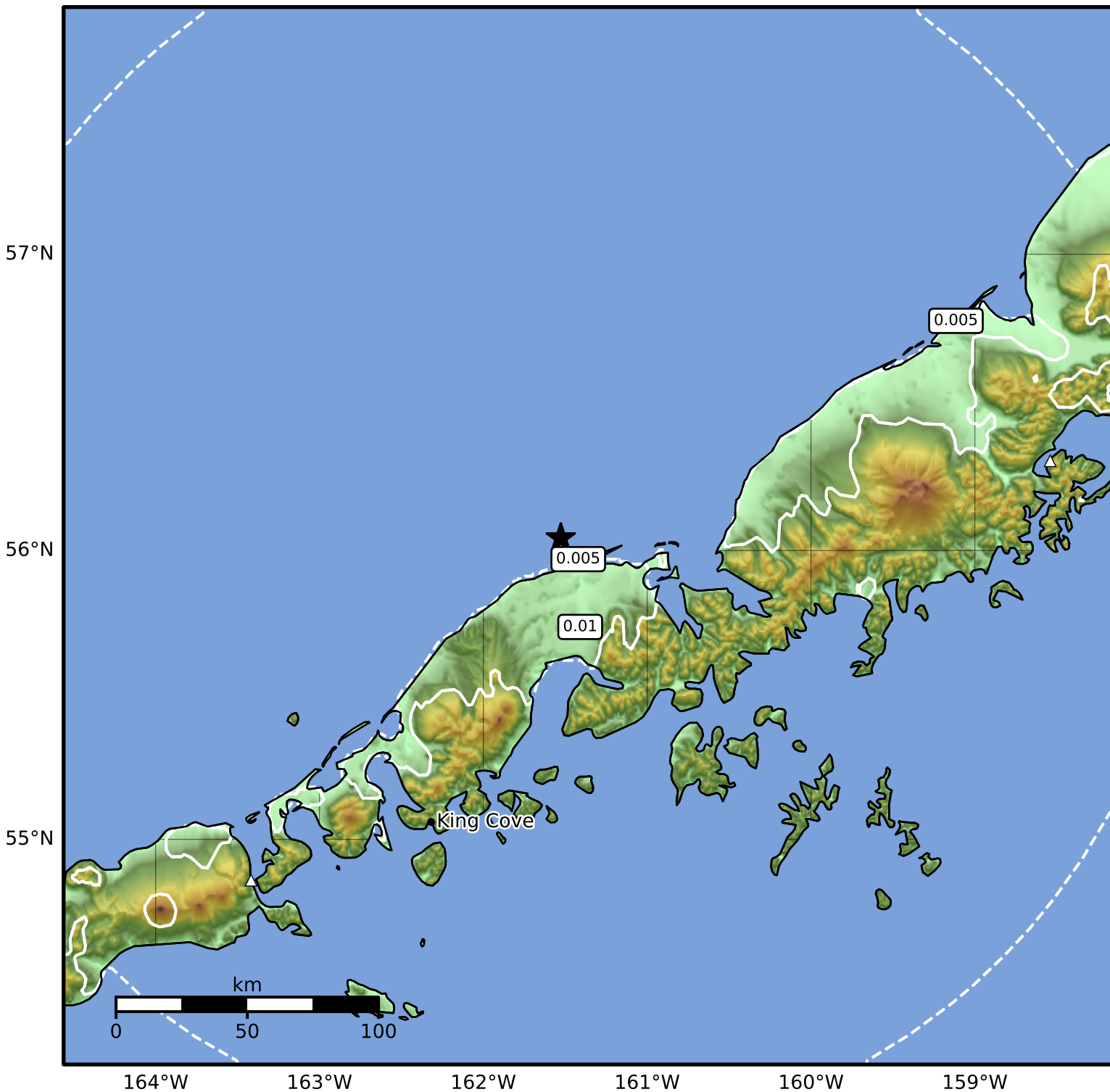


1.0 Second Peak Spectral Acceleration Map Alaska Earthquake Center
ShakeMap: 21 km (13 miles) WNW of Nelson Lagoon
Mar 04, 2025 08:26:54 UTC M3.9 N56.04 W161.53 Depth: 214.4km ID:ak0252wbs0ox



SA(1.0) (%g)	0.1	0.2	0.5	1	2	5	10	20	50	100	200
--------------	-----	-----	-----	---	---	---	----	----	----	-----	-----

Scale based on Worden et al. (2012)

Version 2: Processed 2025-03-04T21:11:36Z

△ Seismic Instrument ○ Reported Intensity

★ Epicenter