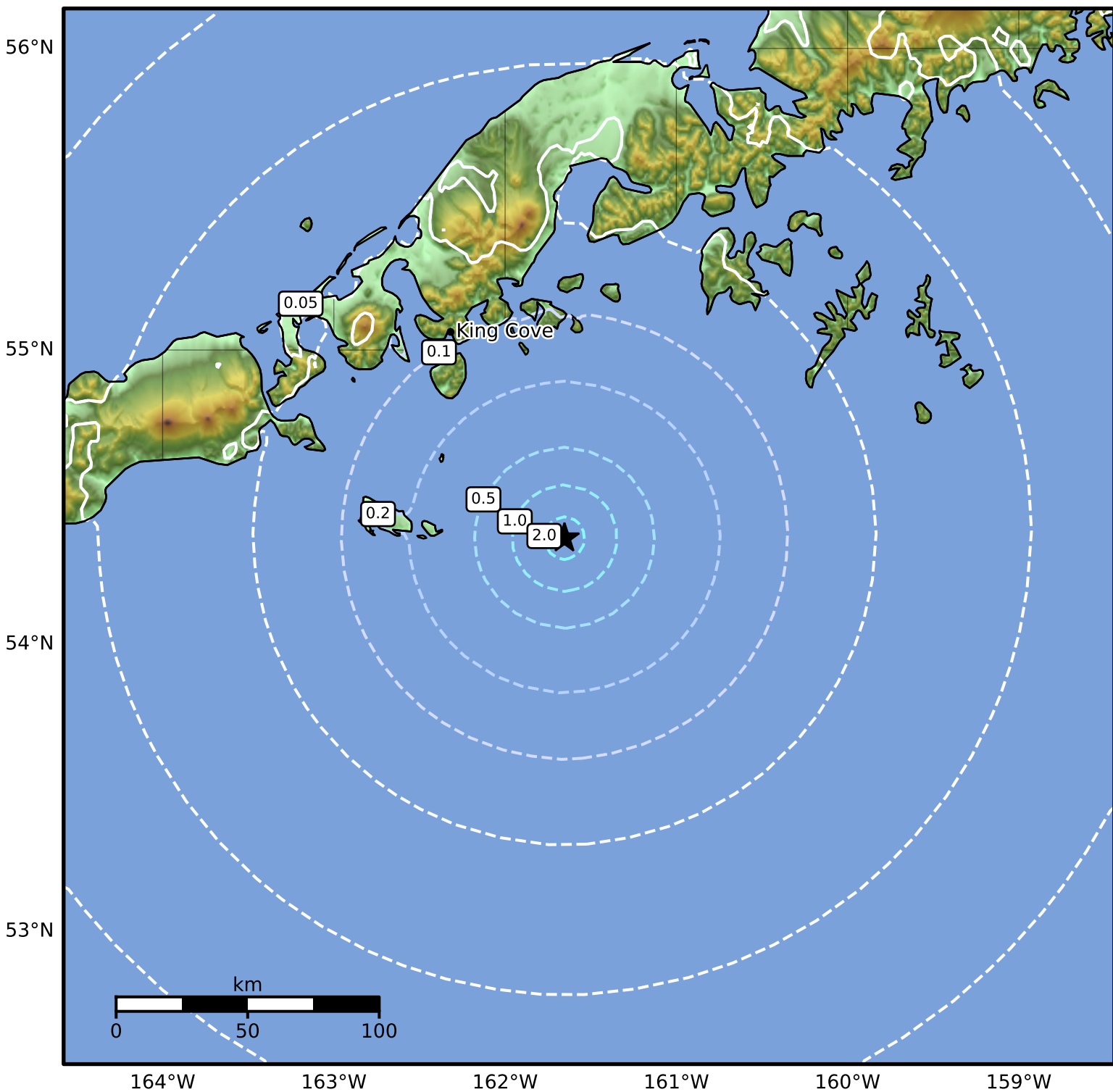


Peak Ground Acceleration Map Alaska Earthquake Center
ShakeMap: 88 km (55 miles) SSE of King Cove
May 19, 2025 15:06:35 UTC M4.4 N54.36 W161.65 Depth: 13.3km ID:ak0256e4o3k3



PGA (%g)	0.1	0.2	0.5	1	2	5	10	20	50	100	200
----------	-----	-----	-----	---	---	---	----	----	----	-----	-----

Scale based on Worden et al. (2012)

Version 2: Processed 2025-05-19T17:45:16Z

△ Seismic Instrument ○ Reported Intensity

★ Epicenter