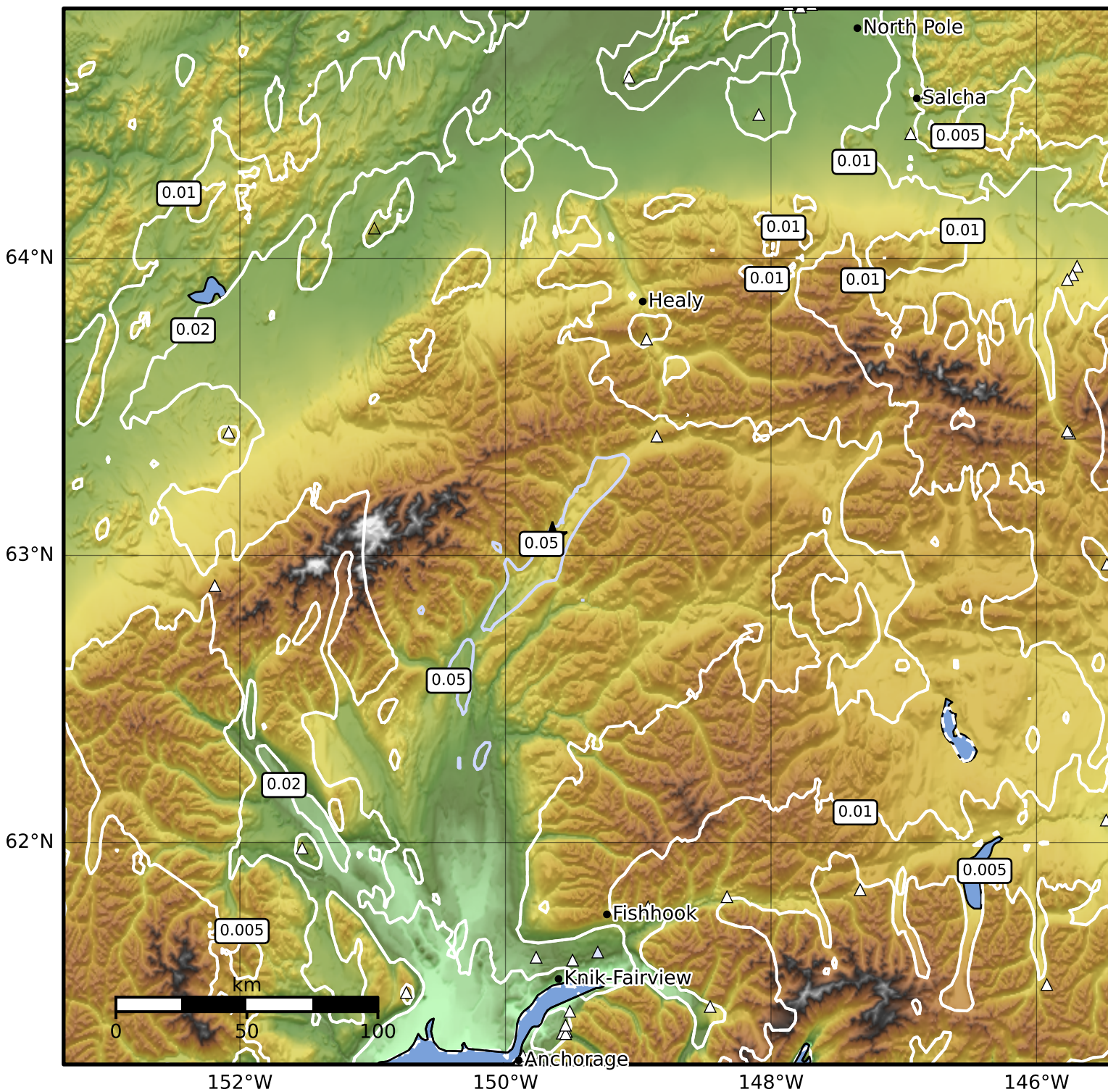


Peak Ground Velocity Map Alaska Earthquake Center
 ShakeMap: 50 km (31 miles) SW of Cantwell
 Jun 18, 2025 05:18:17 UTC M3.8 N63.06 W149.65 Depth: 87.5km ID:ak0257rkwpqb



PGV (cm/s)	0.1	0.2	0.5	1	2	5	10	20	50	100	200
------------	-----	-----	-----	---	---	---	----	----	----	-----	-----

Scale based on Worden et al. (2012)

△ Seismic Instrument ○ Reported Intensity

Version 2: Processed 2025-06-18T05:54:37Z

★ Epicenter