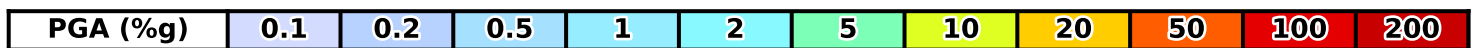
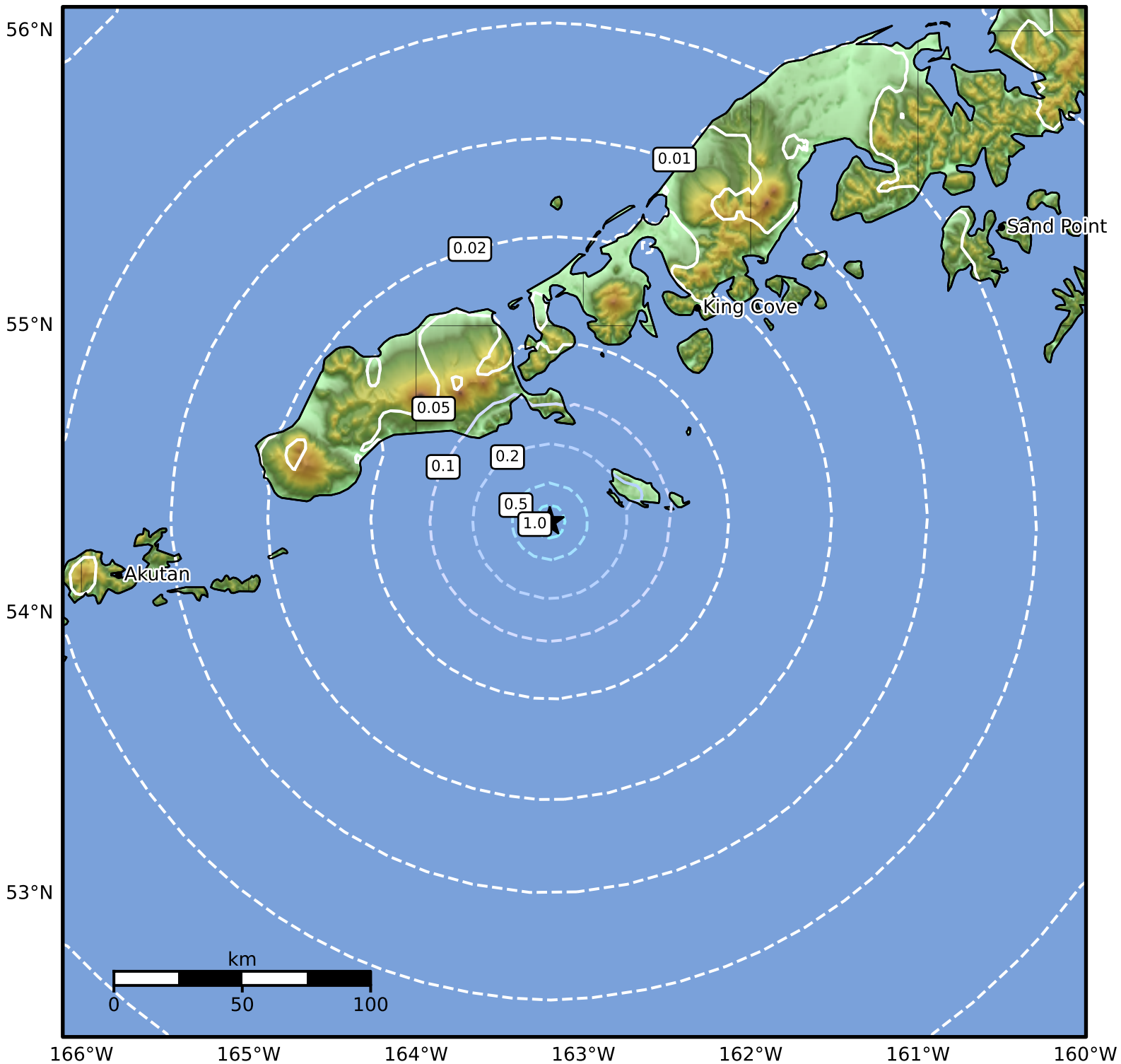


Peak Ground Acceleration Map Alaska Earthquake Center  
ShakeMap: 60 km (37 miles) SSE of False Pass  
Aug 01, 2025 22:12:25 UTC M3.7 N54.32 W163.20 Depth: 2.3km ID:ak0259smn30t



Scale based on Worden et al. (2012)

Version 1: Processed 2025-08-01T22:15:08Z

△ Seismic Instrument ○ Reported Intensity

★ Epicenter