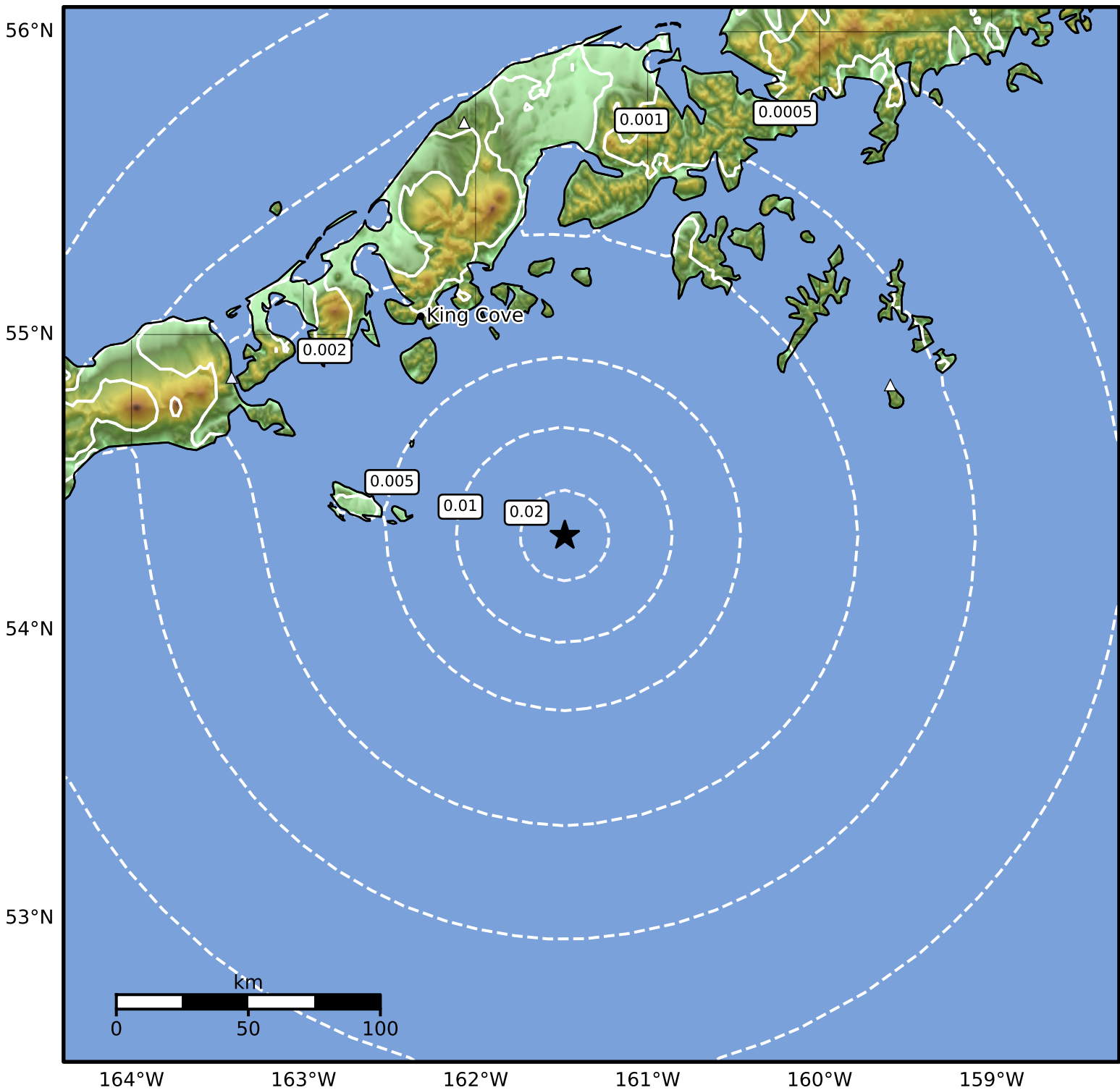


1.0 Second Peak Spectral Acceleration Map Alaska Earthquake Center
 ShakeMap: 97 km (60 miles) SSE of King Cove
 Sep 04, 2025 01:05:36 UTC M3.6 N54.32 W161.48 Depth: 32.8km ID:ak025bcidazq



SA(1.0) (%g)	0.1	0.2	0.5	1	2	5	10	20	50	100	200
--------------	-----	-----	-----	---	---	---	----	----	----	-----	-----

Scale based on Worden et al. (2012)

Version 2: Processed 2025-09-04T04:09:12Z

△ Seismic Instrument ○ Reported Intensity

★ Epicenter