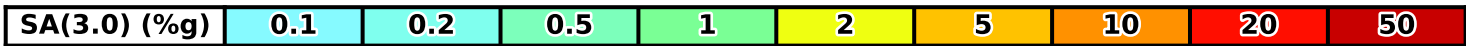
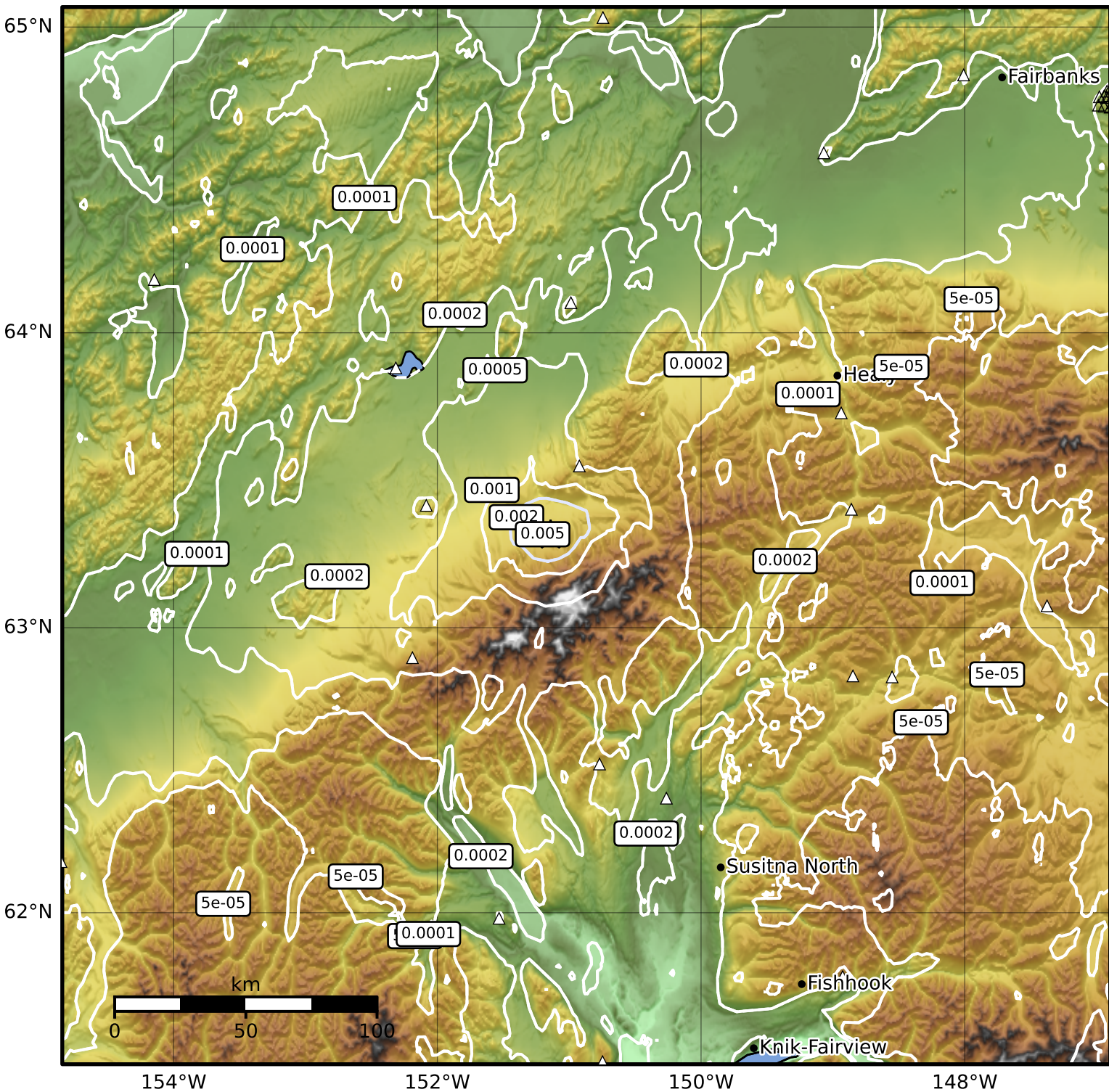


3.0 Second Peak Spectral Acceleration Map Alaska Earthquake Center
 ShakeMap: 80 km (50 miles) SE of Lake Minchumina
 Feb 02, 2026 07:49:25 UTC M3.3 N63.32 W151.14 Depth: 4.5km ID:2026chiurk



Scale based on Worden et al. (2012)

Version 3: Processed 2026-02-04T13:34:41Z

△ Seismic Instrument ○ Reported Intensity

★ Epicenter