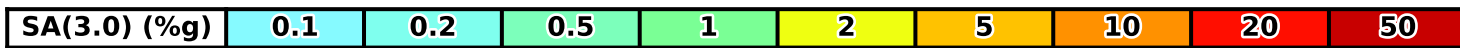
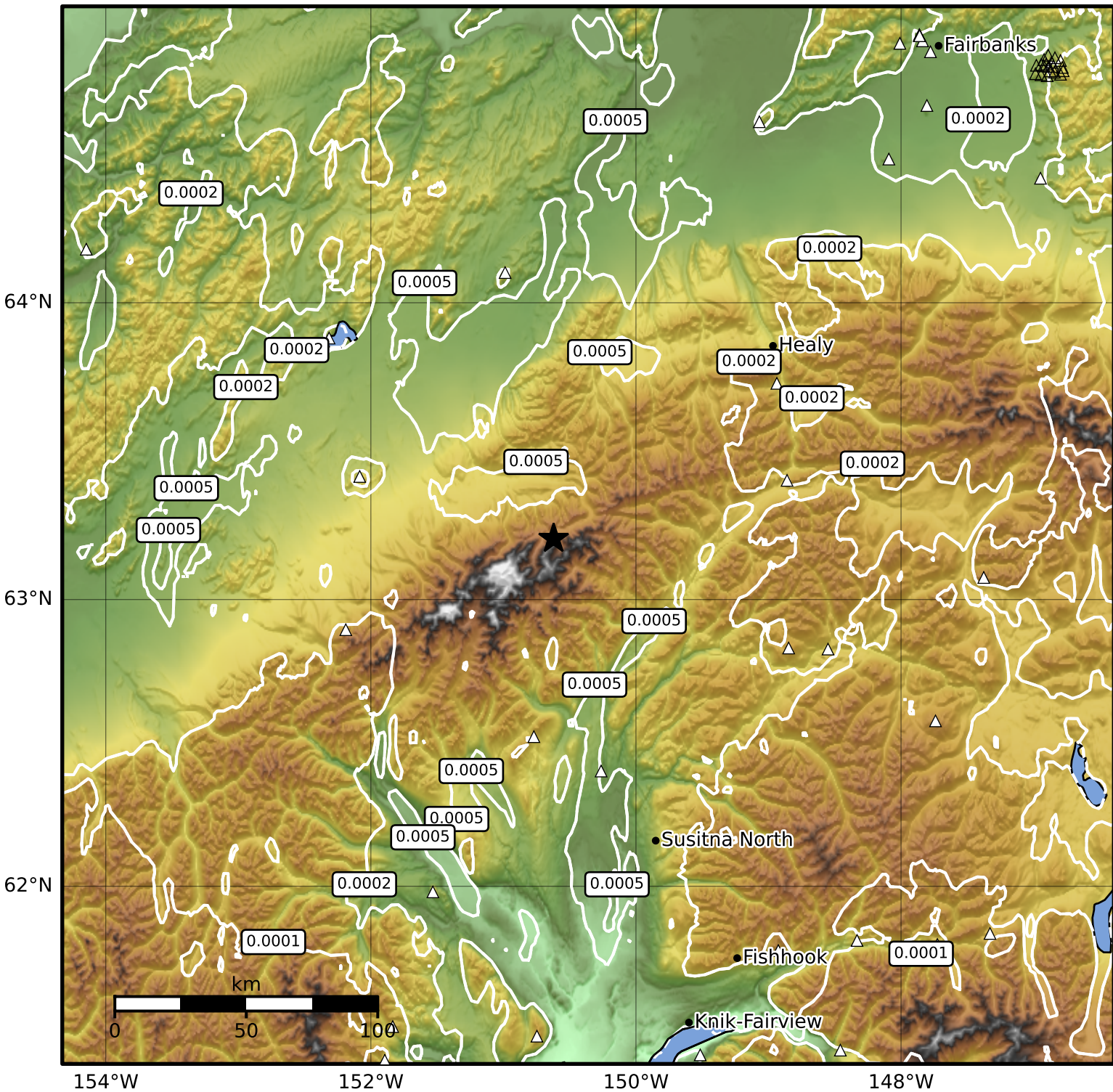


3.0 Second Peak Spectral Acceleration Map Alaska Earthquake Center  
 ShakeMap: 86 km (53 miles) WSW of Cantwell  
 Feb 07, 2026 09:52:36 UTC M3.6 N63.21 W150.62 Depth: 118.2km ID:2026cqrnfm



Scale based on Worden et al. (2012)

Version 2: Processed 2026-02-09T22:35:32Z

△ Seismic Instrument ○ Reported Intensity

★ Epicenter