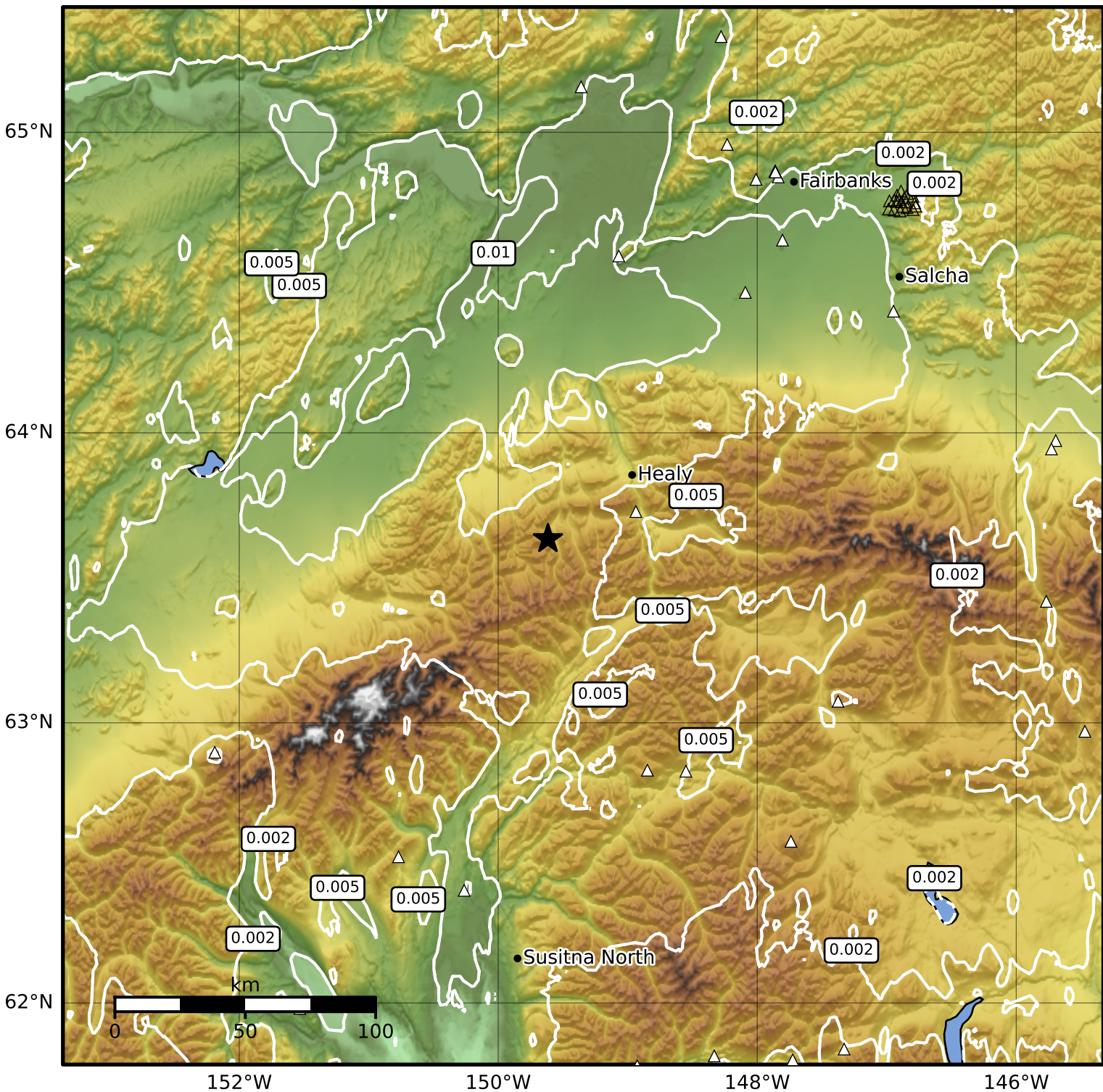


Peak Ground Velocity Map Alaska Earthquake Center
 ShakeMap: 43 km (27 miles) NW of Cantwell
 Mar 04, 2026 20:21:37 UTC M3.5 N63.64 W149.62 Depth: 121.9km ID:a2026eljngv



Scale based on Worden et al. (2012)

Version 2: Processed 2026-03-04T22:38:56Z

△ Seismic Instrument ○ Reported Intensity

★ Epicenter