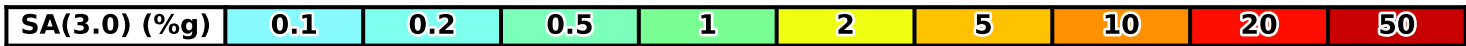
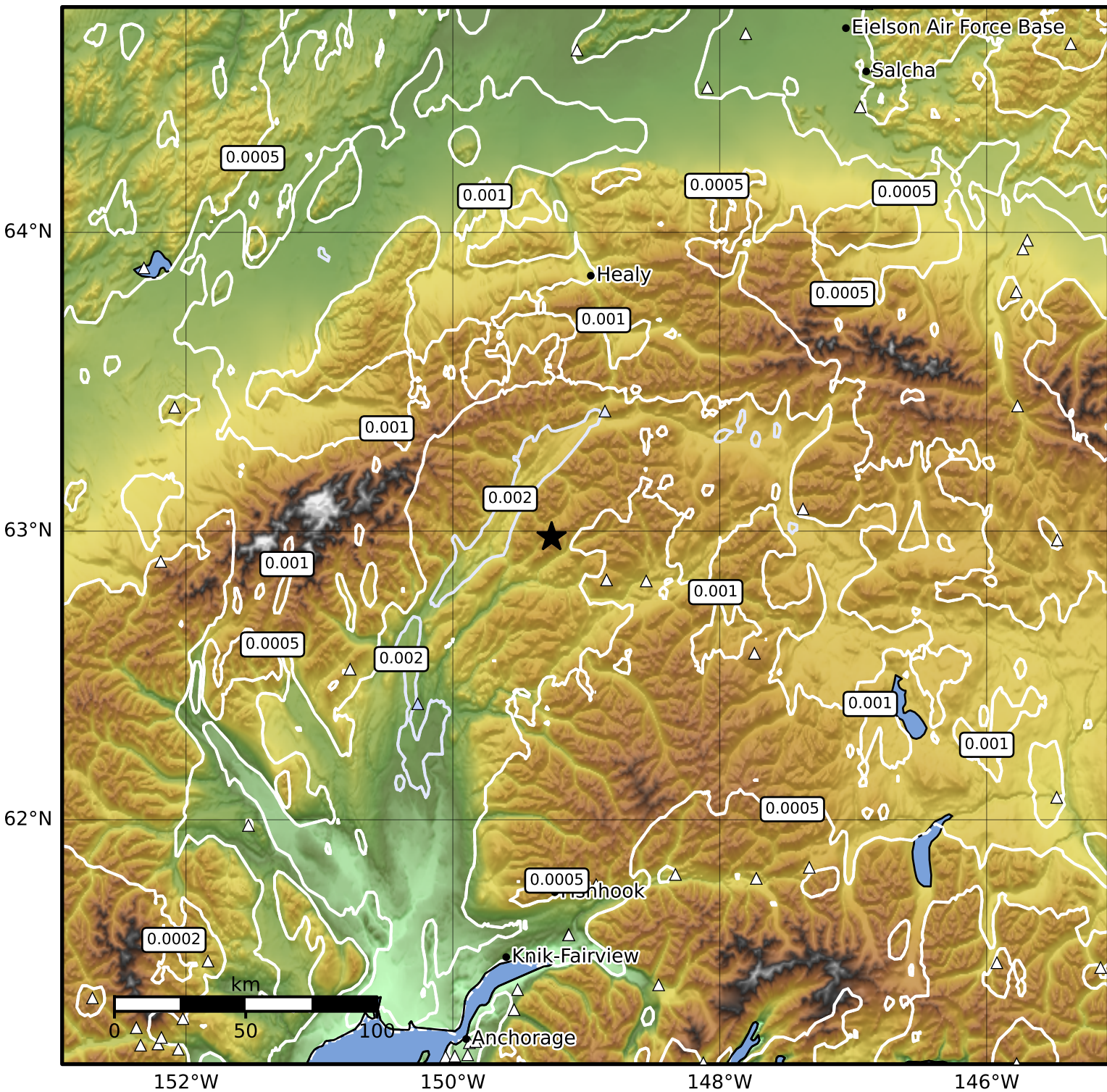


3.0 Second Peak Spectral Acceleration Map Alaska Earthquake Center  
 ShakeMap: 49 km (30 miles) SSW of Cantwell  
 Mar 20, 2026 09:14:05 UTC M3.9 N62.98 W149.26 Depth: 74.1km ID:a2026fnxaci



Scale based on Worden et al. (2012)

Version 2: Processed 2026-03-20T09:28:55Z

△ Seismic Instrument ○ Reported Intensity

★ Epicenter