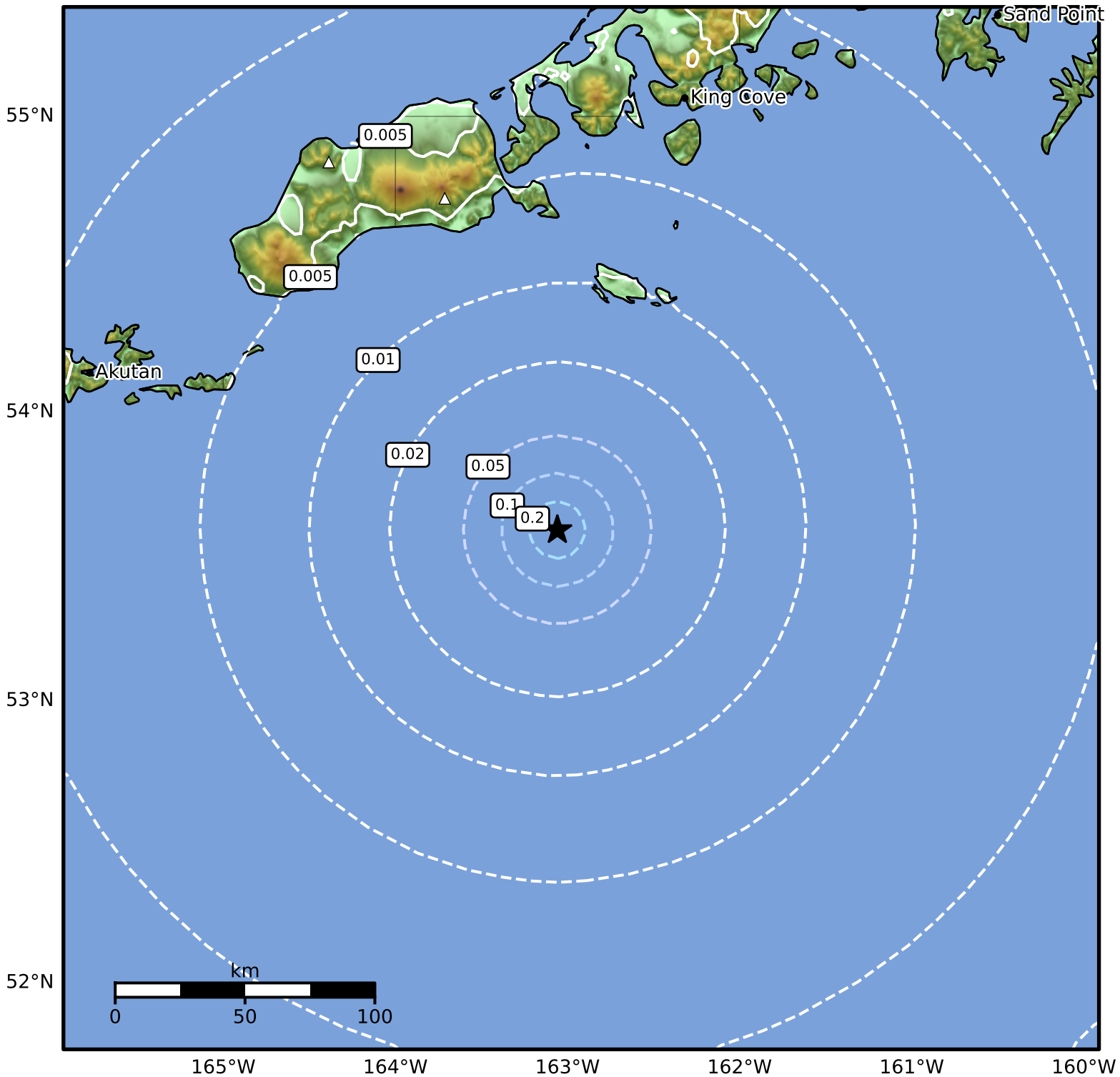


Peak Ground Velocity Map Alaska Earthquake Center
ShakeMap: 174 km (108 miles) SSW of King Cove
Mar 21, 2026 17:30:44 UTC M3.5 N53.59 W163.06 Depth: 9.9km ID:a2026fqjfgi



Scale based on Worden et al. (2012)

△ Seismic Instrument ○ Reported Intensity

★ Epicenter

Version 2: Processed 2026-03-21T21:05:24Z