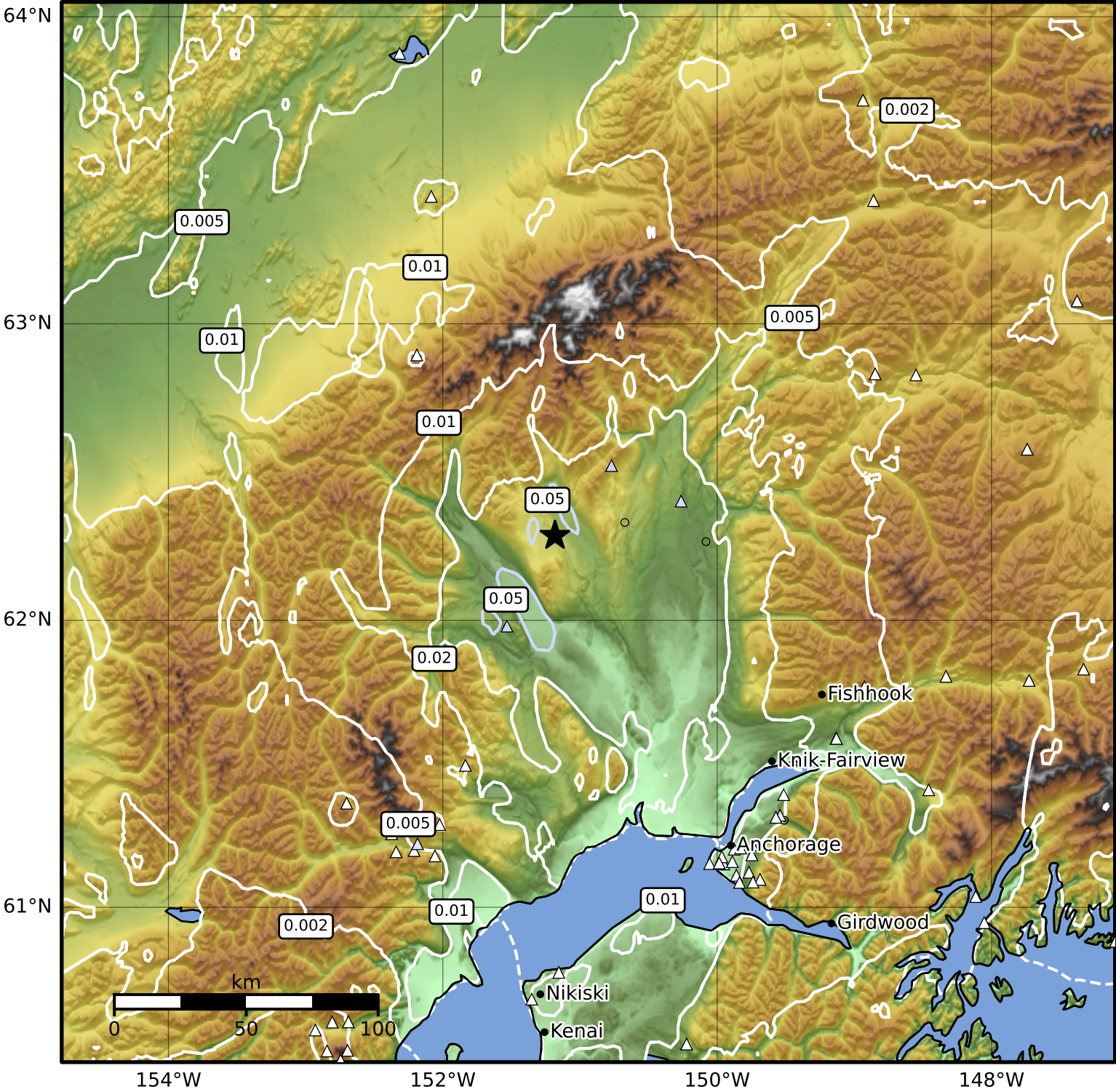


Peak Ground Velocity Map Alaska Earthquake Center  
 ShakeMap: 43 km (26 miles) N of Skwentna  
 Apr 07, 2026 11:46:49 UTC M3.6 N62.29 W151.18 Depth: 86.1km ID:a2026gvddoy



| PGV (cm/s) | 0.1 | 0.2 | 0.5 | 1 | 2 | 5 | 10 | 20 | 50 | 100 | 200 |
|------------|-----|-----|-----|---|---|---|----|----|----|-----|-----|
|------------|-----|-----|-----|---|---|---|----|----|----|-----|-----|

Scale based on Worden et al. (2012)

Version 3: Processed 2026-04-07T13:20:51Z

△ Seismic Instrument    ○ Reported Intensity    ★ Epicenter