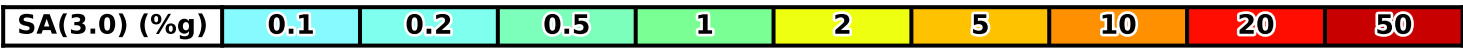
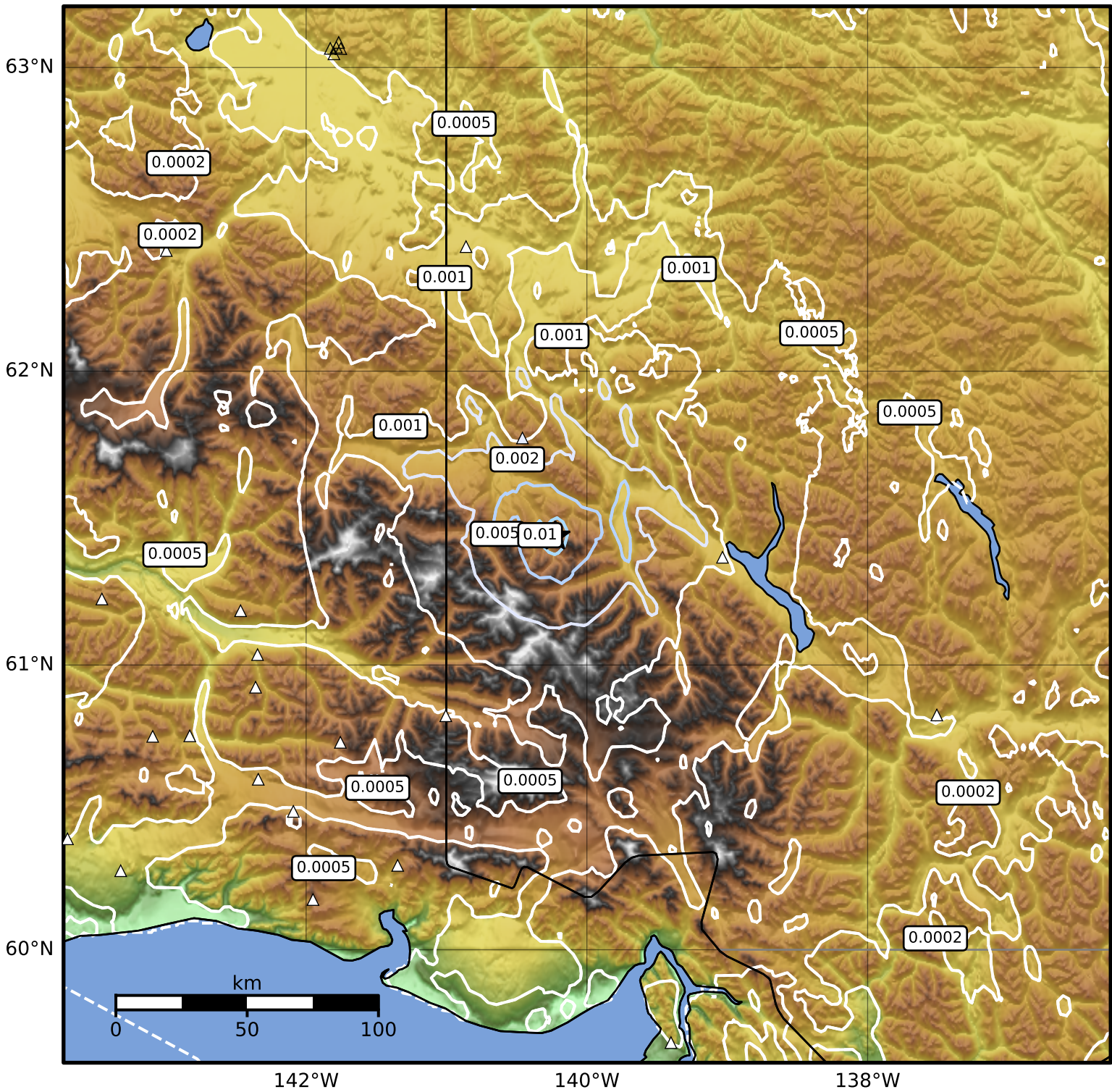


3.0 Second Peak Spectral Acceleration Map Alaska Earthquake Center
ShakeMap: 134 km (83 miles) E of McCarthy
Apr 28, 2026 13:26:09 UTC M3.8 N61.44 W140.22 Depth: 5.0km ID:a2026ihurqf



Scale based on Worden et al. (2012)

Version 3: Processed 2026-04-28T17:20:17Z

△ Seismic Instrument ○ Reported Intensity

★ Epicenter