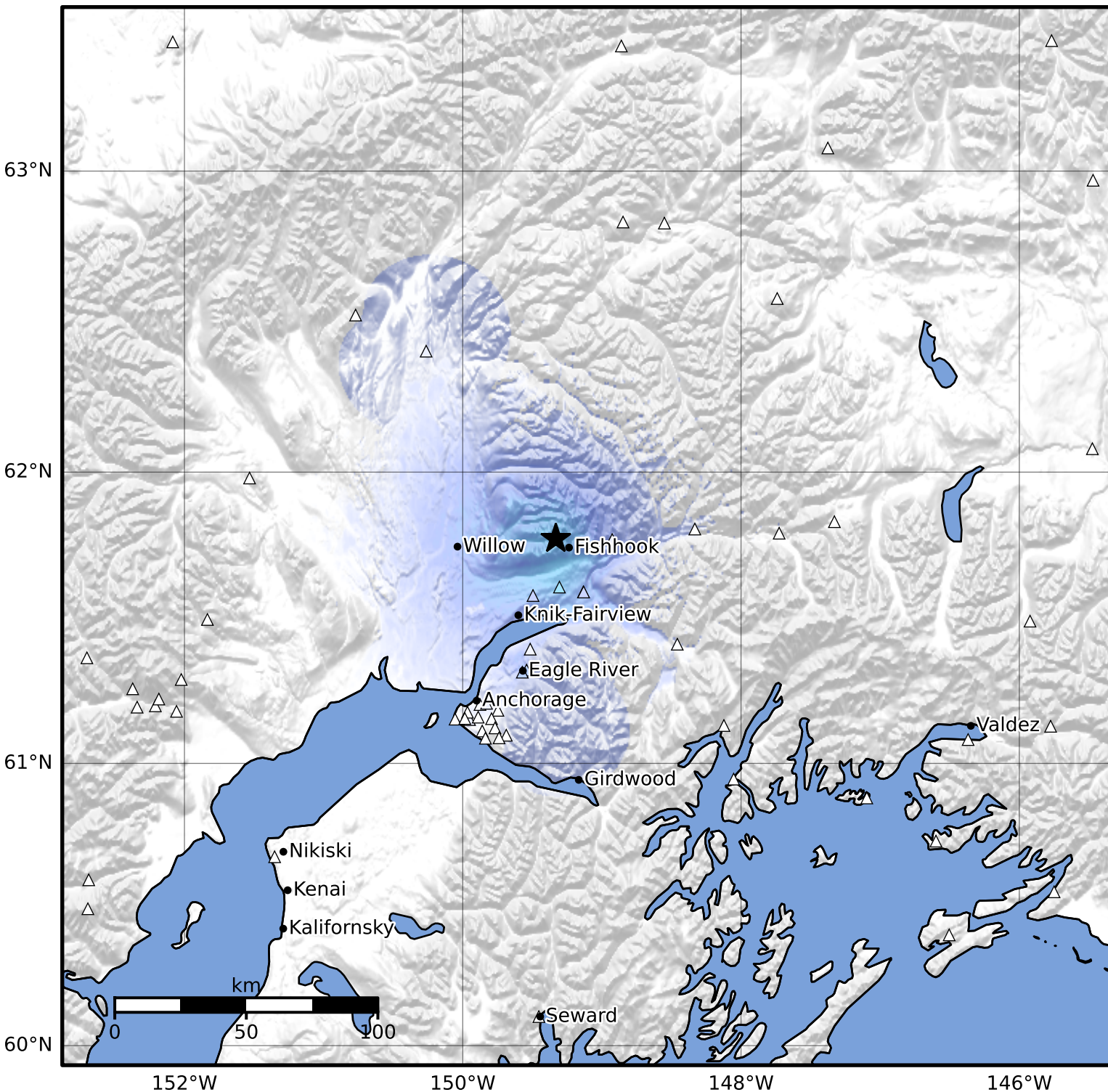


Macroseismic Intensity Map Alaska Earthquake Center
 ShakeMap: 22 km (14 miles) NNE of Wasilla
 May 06, 2026 07:56:03 UTC M3.5 N61.77 W149.33 Depth: 16.5km ID:a2026ixmpuk



SHAKING	Not felt	Weak	Light	Moderate	Strong	Very strong	Severe	Violent	Extreme
DAMAGE	None	None	None	Very light	Light	Moderate	Moderate/heavy	Heavy	Very heavy
PGA(%g)	<0.0464	0.297	2.76	6.2	11.5	21.5	40.1	74.7	>139
PGV(cm/s)	<0.0215	0.135	1.41	4.65	9.64	20	41.4	85.8	>178
INTENSITY	I	II-III	IV	V	VI	VII	VIII	IX	X+

Scale based on Worden et al. (2012)

Version 3: Processed 2026-05-06T08:03:38Z

△ Seismic Instrument ○ Reported Intensity

★ Epicenter